

Children's Eternal Rainforest
Monteverde Conservation League

Annual Report 2015

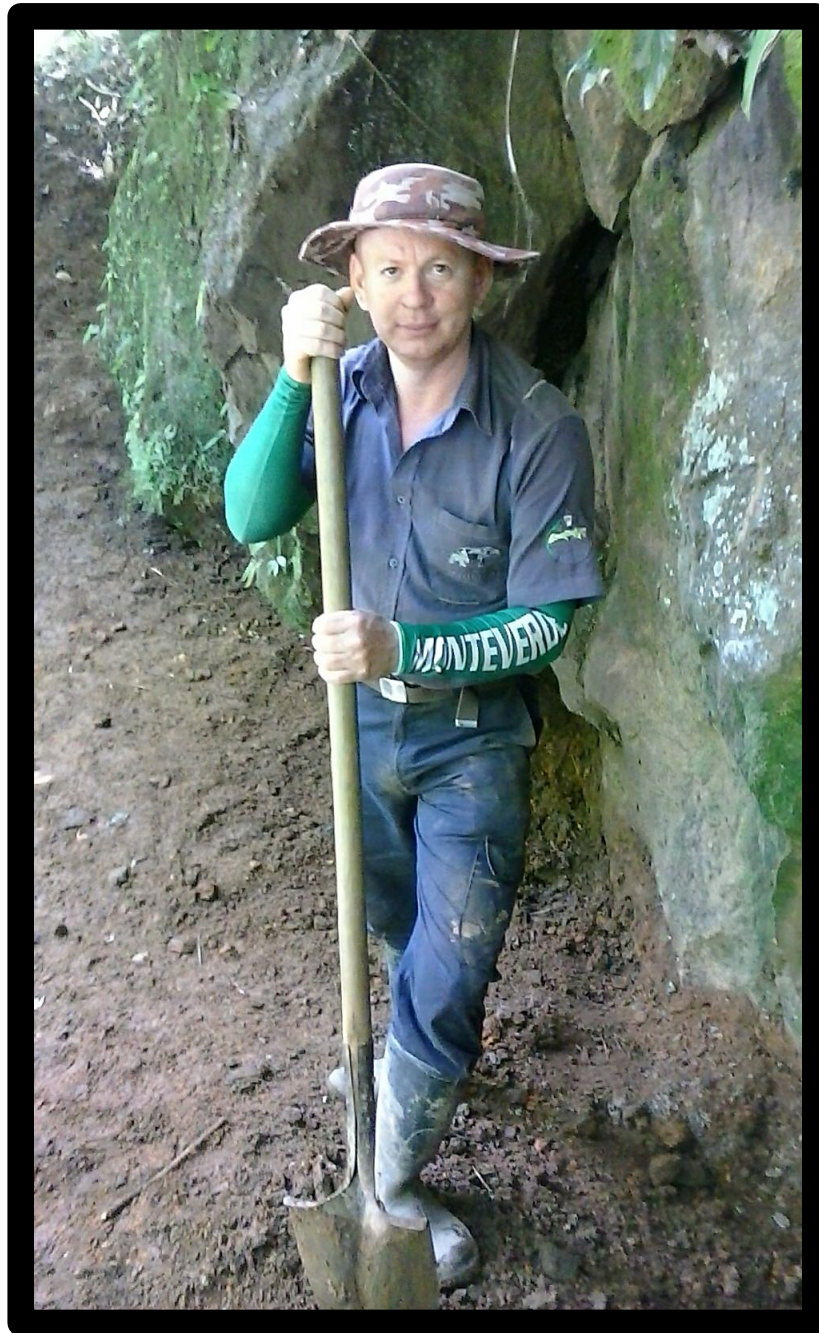


Sector Maria Luisa, Cerritos de la Tigra.

Monteverde, Costa Rica
February 13, 2016



**BOSQUE ETERNO
DE LOS NIÑOS**
CHILDREN'S ETERNAL
RAINFOREST



In Memory of Henry Murillo Rodríguez
October 5, 1974 – December 15, 2015
MCL Staff Member

We will always remember his great spirit, fellowship, and above all his commitment and great sacrifice for the Children's Eternal Rainforest

INTRODUCTION

Monteverde, Puntarenas
February 8, 2016

The Monteverde Conservation League, like the forest it protects, has weathered storms and droughts. Its deep roots and strong connections have allowed it to survive even in the face of quite challenging circumstances. On this day, as the MCL celebrates its 30th anniversary, I feel proud to be part of such a remarkable organization.

My first six months with the Monteverde Conservation League have been a whirlwind, with high points and also very difficult times. On February 4, 2016, we gathered at Pocosol to dedicate a new trail in memory of our late friend and coworker Henry Murillo Rodríguez. Henry died on December 15, 2015, due to complications following a serious accident while carrying out his duties in a remote area of the Children's Eternal Rainforest. Henry was a beloved member of our Maintenance team for more than 6 years. He will be missed deeply.

We are acutely aware that naming a trail in Henry's honor is merely a symbolic gesture, and we do not pretend with this gesture to compensate for the ultimate sacrifice made by Henry and his family. But this is one way to recognize Henry's lasting contribution to the BEN and pay tribute to his memory. We hope that future visitors who walk on the Henry Murillo Trail will come to love and better understand the forest, and that they will become ambassadors for the BEN, thereby promoting its conservation and honoring Henry's memory.

I am so proud of each and every member of the MCL team for their response in the face of this tragic situation. The solidarity of the staff has been incredible. I know we did our best under remote and unfavorable circumstances to help Henry, and we continue to support his family in the aftermath of his passing. However, this doesn't do much to lessen the blow. We owe it to our staff, and to Henry, to do everything in our power to prevent such an accident in the future, and to optimize our response in the face of any type of emergency, in any part of the BEN. In this vein, we have formed an Emergency Prevention and Response Committee, and we will be taking a hard look at ways we can improve in this area. In honor of Henry's memory, we must learn all we can from this tragedy.

There is no good way to transition from the loss of a beloved friend and colleague, to whatever is next. I will say that through it all, we have been blessed to have the support of many individuals and organizations around the globe, who continue to champion the MCL in myriad ways. The outpouring of sympathy and encouragement, both locally and internationally, has been heartening.

During 2015, we also had active support in the form of donations from our sister organizations in the United States (Friends of the Rainforest, Engage Globally), England (Children's Tropical Forests U.K.), Sweden (Barnens Regnskog), and Germany (Kinderregenwald Deutschland e.V.). A complete summary of donations can be found near the end of this report. In February 2015, we had a special visit from Roland and Barbara Paul. Roland is the Chair of Kinderregenwald, which in 2015 donated more than 10,500 Euros for Land Purchase and Protection in the BEN. In addition, Roland helped to coordinate and fund the visit of renowned German nature photographer Markus

Mauthe, whose spectacular photos of the BEN are now ours to use in promotion and marketing. Finally, I want to highlight the special contribution of the 4th grade students from the American School of Madrid (Spain), whose Read-a-Thon raised more than 2,000 Euros for the BEN. The Children's Eternal Rainforest, true to its name, continues to receive the support of children (and adults) from around the world.

We continue to strengthen ties with other local organizations and institutions. We are active members of the Bellbird Biological Corridor, the Monteverde Environmental Education Commission (CEAM), the Monteverde Research Advisory Committee (CAIM), and the Special Commission for Water Resource Management in Monteverde (CEGIREH). We are eager to begin more outreach to community development associations and ASADAs as a way to reinforce support for the BEN in neighboring communities. And we are looking forward to launching a special marketing effort in conjunction the Monteverde Reserve and Santa Elena Reserve, as partners in conservation as well as ecotourism.

Although there is no doubt in anyone's mind that the MCL, as the owner of the largest private forest reserve in Costa Rica, is carbon neutral, we are looking at how we can use carbon neutrality to support the economic sustainability of the organization. We have begun documenting the organization's carbon footprint, using 2016 as a baseline year, and are beginning to work with local partners to see how we can best move forward in this arena.

We are moving forward economically as well. We closed the 2014-2015 year with a positive balance, in spite of having to cover the cost of a new Executive Director's salary during the last two months. Although the budgetary projection for 2015-2016 forecasts a deficit, we are confident that we will make up the difference by growing visitation and donations. In addition, we are hopeful that the Payment for Environmental Services program will continue to grow. In 2015, we achieved the highest annual placement (hectares) in PSA in the history of the organization, and have submitted proposals for an ambitious quantity of properties for the 2016 cycle.

As we look ahead to our next 30 years, I believe the Monteverde Conservation League can expect increasing visitation, continued support from communities near and far, and an increasing financial stability that will permit the Children's Eternal Rainforest to truly be eternal in every sense of the word. In honor and celebration of the MCL's 30th anniversary, we will be holding Open House celebrations at both Bajo del Tigre (Monteverde) and Finca Steller (La Tigra). We will be in touch soon with dates and more information.

Best wishes, and thank you for your support.

Sincerely,

Lindsay Stallcup
Executive Director



REPORTS FROM THE BOARD OF DIRECTORS

President's Report

It is difficult to talk about achievements and goals in the wake of the loss of an MCL family member, Henry Murillo, who died a few weeks ago from an accident he suffered while carrying out field work in the BEN. We have no choice, however, but to keep moving forward and, if anything, work even harder both in and of the MCL as a way to honor Henry.

The board's efforts this year started with the big decision to restructure our administrative leadership. Specifically, we felt that our then executive director, Yúber Rodríguez, had a range of responsibilities that no human being could fulfill, and that it was best to divide those responsibilities into two job positions. We therefore proposed focusing Yúber's work on his areas of greatest expertise - particularly environmental service payments, legal cases, and some other administrative responsibilities, which all require much time and knowledge - and seeking a new director with experience and skills in other areas. Above all, we sought someone who could focus on marketing, fundraising, a more proactive relationship with partner organizations both locally and internationally, improving the quality and profitability of our stations, tours, and merchandise, and streamlining some aspects of our internal operations.

Having analyzed, and in a few cases interviewed, more than 40 candidates, we selected Lindsay Stallcup for the position of Executive Director, and she started work on the 1st of August. We feel that Lindsay's experience and skills fit the profile we were seeking very well. For the last seven years, she had been working at UGA in San Luis, where she handled many aspects of academic courses, guides, volunteers, tourist visitation, publicity, research, and community outreach. Before that, she worked with conservation projects in the U.S. and Mexico, taught various tropical ecology classes, and earned her Master's degree in Ecology through studies of stream ecology at La Selva Biological Station in Sarapiquí. We feel very fortunate to have two people - Lindsay and Yúber - with such full and complementary experience on our team.

With the arrival of a new director, it has been a good time to review and define clearly MCL priorities. In August we completed an extensive document that summarizes those priorities. Based on that document and other planning analyses done by the board over the last few years, Lindsay and I have been putting together a strategic plan for MCL. A first draft of that plan will be presented to the board in the coming weeks. The following is a summary of the organization's main goals.

The MCL's main achievement to date has been to purchase and protect the BEN. With nearly 23,000 hectares, the BEN is the largest private reserve in Costa Rica and, straddling seven different life zones, is one of the most biodiverse spots on the planet. It is a source of water for communities and various hydroelectric projects, including those at Lake Arenal, which supply a third of the country's electricity. MCL continues to acquire critical, strategic pieces of land when funds are available. The organization's main focus now, however, is on other forms of consolidation – specifically, seeking ways to achieve greater financial sustainability, strengthen its programs in protection, maintenance, and education, and foster more research in the BEN.

We need approximately half a million dollars to sustain the organization at its current (minimal) level of operations. The main source of net income for MCL at present is environmental service payments

(or "PSA's", after the Spanish "Pagos de Servicios Ambientales"). We hope the PSA's continue to produce important income for the organization, but how much will always be somewhat unpredictable. For example, in 2012 and 2013, PSA income suddenly dropped from an annual average of about \$300,000 to about \$190,000 (due to an unexpected shift of priorities at FONAFIFO, our biggest PSA provider), leaving MCL with a serious income shortage.

Thus, the number one priority for MCL is to diversify and increase our income. Almost all other goals and needs depend, ultimately, on that. We believe we are quite capable of achieving the financial stability we so desire if we improve efficiency in the following areas.

DONATIONS: We have a story that, when well-presented, is extremely convincing and evocative, both because of the incredible achievements of the organization until now and because of its very real and urgent needs for the future. We must work better to identify potential donors, communicate with them, make easier the decision and process of donating, and provide feedback after receiving a donation. Keys are:

~ To ensure that any **visitor to the BEN** learns why the BEN is so important and why it needs support, that they leave contact information if interested, and that we follow up that contact by providing attractive information and easy mechanisms to make donations.

~ This year we made a new pamphlet that focuses our message clearly, and another flier to promote Bajo del Tigre; we still need to update and make considerable improvements to our **website**. Within our website or independently we must set in motion "crowd-funding" campaigns or equivalent for certain projects. It is worth noting that the U.S.-based NGO Engage Globally, which started supporting us this year, managed to raise more than \$5,000 for the BEN primarily through crowd-funding and Google ONE campaigns. We are very grateful to Heather Heckel and Engage Globally for coordinating that effort.

~ To further foment our relationship with **collaborating international organizations**. We are privileged to have partner organizations already established in several other countries and we must feed their enthusiasm with updated, clear messaging, a good website, donation follow-up, etc. On this theme, it is important to highlight that this year MCL reestablished relations with Friends of the Rainforest (FoR, previously Friends of the Children's Eternal Rainforest, and before that, Monteverde Conservation League, U.S.). A year ago, MCL had decided to stop working directly with FoR, for the reasons I explained in my report and answers to questions in the 2015 Assembly. In April, however, FoR offered a new policy of forwarding 90% of donations made explicitly for the BEN to MCL and keeping just 10% for its own expenses, which seemed to us very reasonable. Since then, FoR has made three important donations to MCL: \$17,650 to support the new executive director position; \$27,000 for critical equipment and infrastructure needs; and \$9,000 for the purchase and protection of almost 3 hectares of strategically important land on the southern edge of the BEN that MCL is in the process of purchasing. Apart from those donations, Steve Tomey of FoR personally brought us a donation of additional, valuable equipment. Many thanks to the new leaders of FoR, Patrick Osborne and Chelsea Raiche, and all of their collaborators, for these important contributions.

We also received valuable support from Europe this year: about \$2,300 raised by students at the Colegio Americano de Madrid (Spain); about \$12,000 from Kinderregenwald Deutschland; and about \$12,500 from Children's Tropical Forests, U.K. Our gratitude to Roland Paul from Germany, Robin Joliffe from England, and all the collaborators who make these donations possible.

~ To seek **small and large private sector donors**, from individuals to corporate sponsors. A large donation or two could really change the history of the organization - particularly if made to the endowment fund. Which doors we can knock on is defined, in broad strokes, in the document "Gift Acceptance Policy" that was created in early 2014 following discussions in board meetings and at the General Assembly about the possibility of a contribution from the company Monsanto (which was ruled out).

~ To seek **grants**. We are well-positioned to apply for all sorts of grants, yet this is a category that has barely been exploited by MCL over recent years. It requires time and some expertise, and at least once in the past MCL has hired someone specifically for this task without success. We must persist, however, perhaps through a system that rewards grant-writers on a commission basis.

~ **To have clearly defined and prioritized needs for donors**. We have worked a lot over the last few years to define specific goals; now we must stick to this "script". The new MCL pamphlet defines five major donation categories. I have explained previously - in the last two president's reports to the Assembly - why the **endowment fund** is now top priority. Next, in order of urgency, are donations for education, research, and, last, land purchase and protection (for now - until we consolidate what we already have). Of course, non-restricted donations are common and always welcome, as we can use them as we see fit.

ENVIRONMENTAL SERVICE PAYMENTS: We have much potential to increase our income through PSA's. Yúber managed to qualify more property for FONAFIFO payments this year than in any previous year, as detailed elsewhere in this report. There are other types of PSA's that we should continue to pursue as well, particularly in the realm of carbon credits.

In 2011, MCL invested time and energy in negotiations to position the BEN as a beneficiary of international carbon credit payments. Unfortunately, current protocols of that market, as defined by REDD+, do not recognize an already protected forest within a region designated "Zona Protectora" by the government. Only changes or "additionality" in land use are recognized. This is an illogical situation which might change, and we must be alert in order to take advantage of any opportunity, because it is a mechanism that could also change the history of the BEN. Ever-increasing public awareness about the carbon issue could also translate into smaller scale opportunities for MCL, as Yúber concluded following his participation in a recent workshop in Monteverde about carbon neutrality.

SALE OF THE LA TIGRA PROPERTY AND SALE OR RENT OF THE FORMER MAIN OFFICE PROPERTY: The logic behind these and related goals was explained in the 2015 president's report. Many of these changes have been effected, but unfortunately, the hostile actions of a new neighbor have significantly reduced the possibility of selling or renting the most important property - that of the former main office - in a market that is quite small even without that problem. In summary, we were close to finalizing the sale of that property about a year ago, when the new owner/manager of the Monteverde Inn and Valle Escondido decided to block our main entrance with large boulders, claiming that the road that descends past the Butterfly Garden belongs to him, is private, and that MCL does not have right of access. This action scared off our very interested buyer. Even though right of access for MCL and for other neighbors along that road was established in a legal case we won several years ago against the previous owners of the Monteverde Inn, it turned out that with the change in ownership we had to take it all to court again. This fact, combined with the equally frustrating slowness/lentitude of the new legal case - which has been going on for a year now without any definitive resolution - means that this aggressive and unnecessary action by the neighbor is doing serious harm

to the Monteverde Conservation League.

IMPROVEMENT IN SERVICES AND PROFITABILITY OF STATIONS AND TRAILS: The BEN does not have an access point capable of drawing the quantity of people who visit, for example, the Monteverde Reserve of the Tropical Science Center: Poco Sol and San Gerardo are a little off the beaten track for mainstream tourism; Bajo del Tigre is well located and protects a rare, drier forest type, but not the more exuberant cloud forest that tops the list of attractions for most Monteverde visitors. There is no doubt, however, that we can make more use of the wonderful resources we have at the four BEN access points: San Gerardo, Poco Sol, Bajo del Tigre, and Finca Steller. Tens of thousands of tourists and students pass through Monteverde and La Fortuna each year, and many would line up to visit the BEN if they knew of its unique offerings - and even more so if they knew that with their visit they would be supporting a not-for-profit conservation initiative.

Key processes are a) improving services and infrastructure at each site and b) adopting a more business-like approach to management and publicity. This year, MCL has continued to make important investments in the infrastructure and promotion of Poco Sol, San Gerardo, and Bajo del Tigre, detailed elsewhere in this report. Hopefully the restructuring of prices with commissions for vendors and the imminent renovation of the website will lead to increased visitation. Among other ideas, we foresee offering more tours in the BEN, such as packages lasting several days, or guided walks at the pretty and easily accessible trails of Finca Steller.

PRODUCT SALES: For the last year or so, the purchase and sale of products has been managed as an endowment fund investment: money from the endowment is used to buy merchandise, and with the sale of that merchandise money is returned to the endowment fund with good interest. An additional portion of proceeds helps our operational fund and another small portion goes to the MCL employees' association. We have also made an effort to improve the quality, supply flow, and presentation of the MCL merchandise. All of this has produced positive results. This year, moreover, we hope to expand the distribution of selected products to a few, popular, non-MCL stores elsewhere.

The ultimate aim of all these financial strategies is to make possible MCL's conservation work, which has three focal areas: land purchase and protection; education; and research.

LAND PURCHASE AND PROTECTION: Even though land purchase is not top priority at present, continued efforts to acquire areas that are strategically important for conservation remain important, and indeed there are always donors for whom this is the most attractive category. In previous president's reports, particularly in 2012, I have explained why MCL no longer receives donations exclusively for land purchase, but rather for a category we call Land Purchase and Protection or LPP. Of the funds donated to this category we use 50% for land purchase, and the other 50% to make it eternal - specifically 40% for everything related to protection and 10% for the endowment fund. This year, \$9,000 from FoR and about \$12,000 from Germany were donated to this category.

We have detailed and complete information regarding where to buy if we have the funds: an ongoing database of properties of interest that is managed by Yúber, and documents that detail our land purchase priorities. Priority properties now are either "holes" in the BEN, or land bordering the BEN that forms part of a biological corridor, particularly in the region identified as the Bellbird Biological Corridor (CBPC). The biological (and other) justification for emphasizing that region has been discussed extensively elsewhere, both by MCL and by other participants in the CBPC project.

EDUCATION: We foment education in many ways, as thousands of students and tourists pass through the BEN each year on courses and guided walks, but it is local education that is most critical. Even if we had a guard for every 1,000 hectares (which is roughly the case in Costa Rica's national park system), it would make no difference if local neighbors did not respect and understand the importance of the BEN. The need for an environmental education program is particularly great in the communities that surround the Caribbean edge of the BEN. Unlike in the Monteverde region, in the La Tigra region there is little ecotourism activity (which creates both an economic incentive for conservation and greater awareness about ecological and conservation themes), and few environmental education programs. It is one of the areas where MCL faces most problems with hunting and illegal species extraction.

We are in the fourth year of a local-origin, \$100,000 grant that pays a full-time environmental educator (Carolina) and some associated needs for five years. An additional donation from a couple through FoR allowed the purchase of a vehicle for that program last year. But we still have two clear needs: a) to attract (not necessarily very large) donations that would allow Carolina to offer more activities, such as field trips, and b) to create a fund that will keep the program going after the current grant expires.

RESEARCH: The BEN offers an opportunity for scientific research that is practically unique in the world given its exceptional biological diversity, the existence of stations and trails in multiple life zones, and the proximity of peaceful communities with ample resources - both scientific and otherwise. We need research to better understand the value and complexity of the riches we inherited from the Swedish children, and to inform our efforts in conservation and education. In spite of all this, the BEN has barely received scientific attention.

A number of undergraduate students conduct relatively brief studies in the BEN each year, but we must seek a) more longer-term, advanced degree-level research and b) the creation of databases that can be used and updated over the long term. More collaborations with local academic institutions such as MVI, UGA, or Texas A&M could be mutually beneficial in this area.

PERSONNEL: As part of this vision of priorities, it is important that the director and department heads revise the role of all our staff with fresh eyes. That is to say, take a look at each position, make sure that the best use is being made of the skills and time of each member of staff, foment the professional growth of all staff or, if necessary, change staff or their job description or their place of work. A greater priority still, we have formed a committee to analyze emergency protocols and, as part of that process, learn whatever we can from Henry's accident that might help to prevent a similar tragedy in the future.

Mark Wainwright

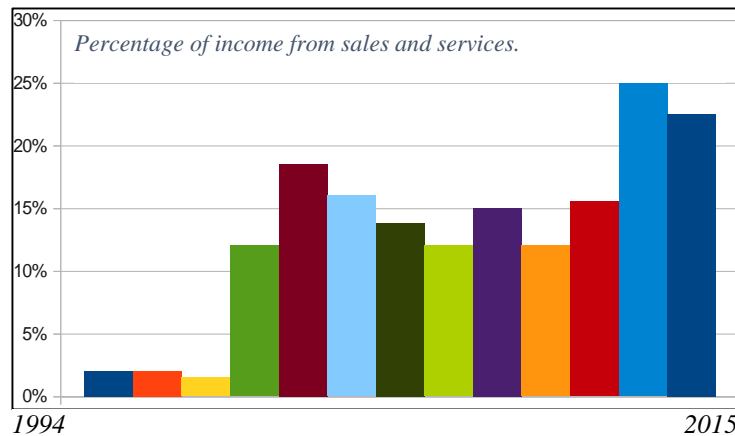
President

Treasurer’s Report

Since this is the 30th anniversary of the Association we should take the opportunity to reflect on our accomplishments and errors of the past 30 years. The treasurer must be concerned with the income and expenses of the organization therefore, I will place emphasis on this aspect of our history and leave the biological and social achievements to be presented in the other reports. I have reviewed the financial statements of the past 25 years to obtain data on the percentage of our income that is self-generated, that is to say, how are we increasingly utilizing the resources on the land that we have preserved without causing damage to the land and the animals. It is most heartening to commonly observe animals that were considered rare 20 years ago.

Many of the purchased farms had been partially cleared for agriculture and although the vast majority have been replanted with native species or allowed to naturally regenerate, we have kept a few acres as clearings, trails, and building sites for stations where students can do research and visitors interested in natural history can stay in comfort. These sites are mostly in isolated locations with difficult access and therefore; the numbers of visitors have been very limited, but over the years we have received donations for the building of stations and trails and slowly the numbers of visitors is increasing.

The stations accommodations are comfortable, but we need to provide information about the plants and animals to be seen, improve trails, and provide easier access. In the coming weeks we are paving the last steep section of road going into Pocosol so it will be accessible by 4 wheel drive most of the year. Hopefully, by utilizing our limited resources at strategic points we can generate more of our operating expenses and then be able



to pay for the other urgent necessities. Also, we won’t be as dependent upon the fluctuating government environmental service payments for protecting the land. In 2015 our sales of services and merchandise were 22.5% of our income compared to 40% for the environmental service payments and 8% from non-restricted donations. Restricted donations allow us to buy land and improve our infrastructure, but we also need funds to pay the monthly expenses.

The following graph illustrates our slowly increasing self-reliance.

Bob Law
Treasurer

Report from Fiscal 1

Members, Monteverde Conservation League

Good morning, distinguished President, members of the Board, and all present here today. The following is the annual report of the Monteverde Conservation League with respect to the following obligations:

Caja Costarricense del Seguro Social (CCSS). In terms of the obligations to the CCSS (national social security institute), the report provided by the CCSS states that the MCL is up to date with payments.

Instituto Nacional de Seguros (INS). The MCL is up to date in terms of payments to INS for workers liability insurance. Payments are made twice a year, the next payment is scheduled for April. The insurance policy for the trails at Bajo del Tigre was paid in September and is up to date.

Accounting. Salaries are in accordance with the Ministry of Labor (Ministerio de Trabajo), and are adjusted every six months (in January and July) according to government recommendations. The MCL does not pay taxes due to its nonprofit status. We have maintained our status of “utilidad pública”; the next round of paperwork in order to maintain this status is between February and April, so we are also up to date in this respect

Legal affairs. As in previous years, the MCL is currently involved in several lawsuits. In particular, cases with the Administrative Court and the Treasury (both as defendants); one in the Agrarian Court of San Carlos (as actors); one in the High Court (as actors, but this case is in process of an appeal filed by one of the defendants); one in the Agrarian Court of Puntarenas (as actors); and various processes in criminal courts (as actors, witnesses, or another part of the process).

The case in Administrative Court and Treasury is a lawsuit filed against the MCL by Banco Nacional de Costa Rica, relating to overlapping properties in Burrito area of La Fortuna. The MCL won an injunction protecting possession of the property, as stated in the annual report last year. However, Banco Nacional continues to claim the property and has filed another lawsuit that threatens the MCL’s ownership of 5 hectares of forest.

The other outstanding case has to do with the disputed access to the office building at the property near the Butterfly Garden in Cerro Plano, Monteverde. The owners of Monteverde Inn blocked access to the property. The MCL filed an injunction and, after a visit by the judge, we were granted the injunction, allowing access to our property. However, these neighbors continue to be problematic and have filed an appeal that would prohibit the MCL from using the main and historic access to our property.

For more details in legal cases, please see the Legal Affairs report.

Thank you,
Marcos A. Méndez
Fiscal 1

Report from Fiscal 2

Dear Members:

Special thanks for allowing me to occupy the position of Fiscal 2 this year, thereby supporting the conservation of natural resources and especially the Monteverde Conservation League.

Following Article Number Forty-five of our statutes, I hereby inform you of the following:

- Assembly number Forty-six, February 14, 2015, is written and transcribed in the Libro de Actas.
- Board of Directors: The Board met 11 times, and elaborated the corresponding documents, from Acta 434 (February 2015) to Acta 445 (January 2015).

Books:

- a. Actas de Asamblea are up to date and transcribed into the legal “Actas de Asamblea Número Tres”.
- b. Actas de Junta Directiva: Actas 434 to 443 are approved and transcribed into the legal “Libro Legal de Actas de Junta Directiva es el Número Siete”.

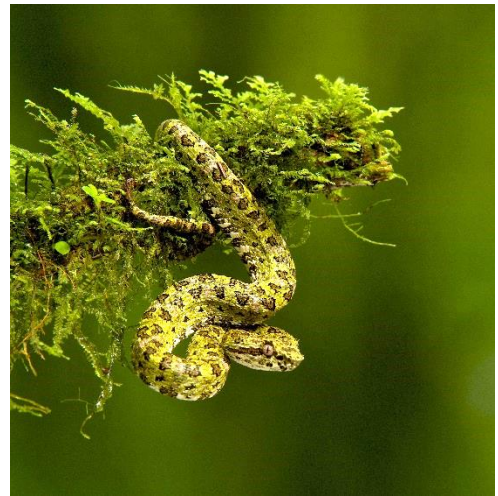
There was good assistance and participation by the members of the Board of Directors, at board meetings as well as other activities of the MCL. The different opinions and backgrounds, and the level of commitment of the board members, allow for good discussion, analysis, and decision-making.

As Fiscal, I have not received any formal complaint related to the activities of our organization.

Thank you,

Yimer Morales Zamora

Fiscal 2



Photographs by Markus Mauthe, renowned German nature photographer, July–August 2015.

EXECUTIVE DIRECTOR'S REPORT

Henry Murillo

On December 15, MCL staff member Henry Murillo Rodríguez passed away in the Puntarenas Hospital following a serious work-related accident on December 3, 2015.

To date, the MCL has complied with all of its official obligations as Henry's employer (INS, CCSS, and others). Payments due to Henry were made to the bank account of his widow, Marlene de Artavia. The MCL has supported the Murillo-de Artavia family in any way we can, including:

- December 4-15: Luis Solano provided transport in an MCL vehicle between La Tigra de San Carlos and the Puntarenas hospital on a daily basis, for Marlene de Artavia and other relatives and friends of Henry. During this time, Luis was also in daily communication with the hospital regarding Henry's situation.
- Luis Solano took Marlene to Banco Nacional and helped her through the process of opening a bank account of her own.
- Luis Solano, Hernán Chacón, and Alberto Zúñiga brought Henry's body from the morgue in Heredia to La Tigra on December 16.
- The MCL took care of the funeral arrangements (logistics and full payment of services).
- The MCL assumed the cost of Henry's burial in the La Tigra cemetery (¢65,000) and agreed to cover the annual payment to the cemetery for Henry's plot (estimated at ¢10,000 per year) in perpetuity.
- Luis Solano is currently helping Marlene to collect and present all of the requisite paperwork for INS, CCSS, ICE, Banco Nacional, and others. In this process, Marlene is also being supported by Ricaute Jiménez, who has offered his legal services to Marlene free of charge.
- For its part, ASEACOM (employee association) made a contribution of ¢92,000 to help cover the costs of Henry's wake and funeral, and put together a collection of school supplies for Henry's daughters, Merelyn and Rachel.

In addition to the list above, the MCL has demonstrated its willingness to help Marlene, Merelyn, and Rachel in any way necessary.

Emergency Prevention and Response

As an organization, we are bound to do all we can to avoid this type of accident in the future, and to optimize our response in the face of any type of emergency. We owe it to Henry, and to the current BEN staff members, to learn all we can from this terrible tragedy. To this end, we have formed an Emergency Prevention and Response committee, which will work in the following areas: (1) emergency prevention, by reducing risk; (2) response in the event of an emergency anywhere in the BEN, either by a staff member or a visitor, including the necessary equipment and cost to obtain it; and (3) training and practice in first aid and emergency protocol for all field staff. The committee is composed of Julia Matamoros, Mark Wainwright, Eladio Cruz, Luis Solano, Hernán Chacón, and Lindsay Stallcup.

As a first step toward first aid training among all MCL staff members, we are pleased that Erick Barquero (Maintenance) and Freddy Campos (Protection) both took – and passed – the Wilderness First Responder course offered by Ecology Project International (Heredia) in January 2016. Their participation in the course was made possible by a generous donation by one of our members.

Promotion and Marketing

One of the best ways to grow the revenue of the organization is by increasing visitation and donations. Both require effective promotion and marketing, good visibility, and a professional image.

We have a ways to go to improve the visibility and image of the BEN, both in Costa Rica and internationally. In the digital environment, we are working on a complete redesign of the website, which is extremely outdated in content as well as technology. We will continue to improve and expand our presence in social networks; the MCL currently has a Facebook page under the name "Children's Eternal Rainforest / Eternal Forest of Children", with more than 4,780 followers. In the physical environment, we must install consistent and attractive signage on local roads as well as highways, in all areas of the BEN.

We are taking steps to adapt to the ecotourism market. We have increased the commissions for agencies throughout the BEN, making us more competitive in the (unfortunately) commissions-driven world of tourism. We must also increase direct reservations at our field stations and the Bajo del Tigre trails; the best way to accomplish this will be through our new website. Direct reservations give us the opportunity to "sell" the BEN – and all that it encompasses – directly to the customer, and to follow up with visitors through newsletters and other media. Another benefit of direct bookings is that we do not have to pay commissions, which means that the MCL can keep that extra 20% with each entrance fee or reservation.

We also have the opportunity to create new ways of attracting visitors. For example, in Pocosol, we can take advantage of the relative proximity to hotels in La Fortuna to promote day visits (entrance to trails with lunch, for example). In Monteverde, we are collaborating with the Monteverde Reserve and Santa Elena Reserve to sell a package of day entrances for "The Three Reserves of Monteverde". We hope that this package will be available for purchase very soon, at the three reserves as well as the Monteverde Chamber of Tourism. Finally, along with the Tropical Science Center, we are analyzing ways to offer the trek from Monteverde to Pocosol in a way that is both safe and economically sustainable.

Economic and Financial Situation

Our main sources of income continue to be ecotourism (trails and stations, 44.1%), Payments for Environmental Services (PSA, 38.3%), sale of souvenirs (1.15%), international donations (12.65%), and interest generated from the investment of operating funds (3.8%; Figure 1).

The increase in income in the 2014-2015 period as compared to the previous period is mainly due to increases in visitation to stations and trails, and donations for specific projects. These, in addition to efforts to control costs, allowed us to close the 2014-2015 fiscal year with a positive balance of ₡1,120,341 colones (Table 2).

The last part of 2015, and the 2015-2016 period, is a period of transition for the MCL, as the hiring of a new Executive Director creates a significant expense for the organization. We are confident that we will come out of 2015-2016 with a balanced budget; however, we are still not sure precisely where the funds will come from. Rather than presenting a balanced budget based on guesswork, the budget projection shown here presents a deficit of 22.5 million colones (Table 3). The main areas in which we hope to demonstrate growth during the period 2015-2016 are visitation to stations and trails, donations, and PSA. We feel confident that, with new effort dedicated to each of these categories by the Executive Director and Director of Land Affairs, we will make up the deficit.

As you can see from the results of the first quarter of fiscal year 2015-2016 (Table 3), we are off to a good start, mainly due to (1) an increase in donations, including a grant from Friends of the Rainforest to help cover the salary of the new Executive Director, and (2) Payments for Environmental Services, which were higher than expected during these months. In addition, revenues from the sale of souvenirs and visitation to stations and trails have already reached 15% of the projection, despite the first quarter falling squarely in the middle of the low season for tourism (October, November and December). We hope to continue this pattern of growth over the coming months.

Figure 1. Gross income by category, October 1, 2014 to September 30, 2015.



Table 1. Balance, October 1, 2014 to September 30, 2015. Amounts expressed in Costa Rican colones.

	2015	2014
<u>ACTIVOS</u>		
Efectivo y Bancos	7,633,530	7,515,438
Inversiones Transitorias	63,531,694	122,624,183
TOTAL ACTIVO CORRIENTE	¢ 71,165,224	130,139,621
Propiedad Planta y Equipo	1,029,759,439	934,351,015
Depreciacion Acumulada	(185,804,341)	(177,590,723)
PROPIEDAD PLANTA Y EQUIPO NETO	843,955,098	756,760,292
Otros Activos		
Inversion Fondo Patrimonial	176,072,750	175,539,150
Inventario Souvenir Fondo Patrimonial	10,687,140	11,473,848
TOTAL ACTIVOS	¢ 1,101,880,212	1,073,912,911
<u>PASIVO</u>		
Documentos por pagar	1,655,940	49,366,421
Gastos acumulados	45,920,957	41,920,957
Retenciones a pagar	4,106,023	3,859,848
Fondo Proyectos	12,964,989	159,316,323
TOTAL PASIVO CORRIENTE	¢ 64,647,909	254,463,549
<u>PATRIMONIO</u>		
Fondo Patrimonial (Total: \$333,080)	173,481,983	175,539,150
Patrimonio por Donaciones Tierras	841,799,732	617,774,694
Patrimonio por Fondos Propios	21,010,247	21,010,247
Remanente Periodo	940,341	5,125,271
TOTAL PATRIMONIO	¢ 1,037,232,303	819,449,362
TOTAL PASIVO Y PATRIMONIO	¢ 1,101,880,212	1,073,912,911

Table 2. Results from fiscal year 2014-2015 (October 1, 2014 to September 30, 2015). Amounts expressed in Costa Rican colones.

	2015	2014
INGRESOS		
Visitación Estaciones	55,647,591	53,990,384
Visitación Senderos Educativos	51,018,516	45,130,069
Servicios Ambientales (PSA)	92,731,503	82,319,378
Donaciones	30,600,944	42,101,193
Intereses Financieros	9,089,808	301,481
Souvenir	2,790,420 *	9,316,937
Total autogeneración ingresos	¢ 241,878,782	233,159,442
Ingresos por Gestion Proyectos	80,882,002	77,004,349
Ingresos por Venta Activos	-	-
TOTAL INGRESOS	¢ 322,760,784	310,163,791
EGRESOS		
Operativos y de Proyectos	192,984,265	143,432,969
Administración	28,947,639	38,637,431
Costo Estaciones	49,376,716	47,557,904
Costo Souvenir	-	3,539,047
Costos Financieros	7,114,478	8,056,753
Proyecto para Desarrollo Específico	43,217,345	63,814,416
TOTAL EGRESOS	¢ 321,640,443	305,038,520
Diferencia entre ingresos y egresos	¢ 1,120,341	5,125,271

*Ingresos de souvenirs del 2015 en adelante es el monto neto; en años anteriores es bruto.

Table 3. Operational Budget projection for the 2015-2016 fiscal year (October 1, 2015 to September 30, 2016), compared with the results of the first quarter (October 1 to December 31, 2015). Amounts expressed in Costa Rican colones.

INGRESOS EN COLONES			
NOMBRE DE LA CUENTA	2016 Real	2016 Presupuesto	%
VENTAS SOUVENIR	670,544.00	4,000,000.00	16.76%
VENTA DE SERVICIOS	19,616,117.00	123,500,000.00	15.88%
SERVICIOS AMBIENTALES	31,379,558.00	95,000,000.00	33.03%
PROYECTOS Y DONACIONES	35,098,312.00	46,250,000.00	75.89%
VEHÍCULOS	0.00	0.00	
TOTAL INGRESOS	88,208,776.00	276,208,000.00	31.94%
INGRESOS POR PRÉSTAMOS		-	

GASTOS EN COLONES			
NOMBRE DE LA CUENTA	2016 Real	2016 Presupuesto	%
SERVICIOS PERSONALES	51,694,149.00	214,133,604.00	24.14%
SERVICIOS BÁSICOS	6,584,437.00	26,818,250.00	24.55%
MATERIALES Y SUMINISTROS	965,817.00	1,865,000.00	51.79%
GASTOS FINANCIEROS Y PRÉSTAMO:	0.00	7,230,000.00	0.00%
SECTORES	5,216,138.00	44,200,000.00	11.80%
PROYECTOS	999,800.00	4,500,000.00	22.22%
COMPRA DE ACTIVOS	0.00	0.00	
SERVICIO A LA DEUDA	0.00	0.00	
TOTAL GASTOS PRESUPUESTADOS	65,460,341.00	298,746,854.00	21.91%

BALANCE	2016 Real	2016 Presupuesto
	22,748,435.00	(22,538,854.00)

General Management Plan, Arenal Monteverde Protected Area

The Monteverde Institute has been working with Costa Rica Forever and SINAC to develop a General Management Plan (*Plan General de Manejo*) for the Arenal Monteverde Protection Zone (ZPAM). The ZPAM currently comprises 28,314 hectares and includes properties of the Monteverde Reserve, the Santa Elena Reserve, and the BEN. For more information, contact Francisco Burgos the Monteverde Institute, at 2645-5053 or direccioncic@mvinstitute.org.

Legal Affairs

Director of Land Affairs: Yuber Rodríguez

Keeping up with legal issues, and dealing with them efficiently and effectively, is a constant challenge to the well-being of the organization. The MCL does have several advantages in the face of legal disputes, in particular, a long institutional memory and the input and recommendations of people committed to the continuity of the BEN. We owe particular thanks to the Legal Committee, a working group which serves as a sort of consultant in navigating the various legal processes that the MCL continues to face. The Legal Committee includes Julia Matamoros, Jorge Maroto, Ricarte Jiménez, Gerardo Céspedes, Hernán Chacón, Luis Solano, Yúber Rodríguez, and Lindsay Stallcup. In the past year, the committee has met three times. The following is a list of ongoing legal cases, with updates from last year's report where appropriate:

1. **Caso Interdicto de Restitución o Amparo de la Posesión en Acceso a Propiedad de la ACM (Entrance to the offices of the MCL in Cerro Plano).** The MCL filed an injunction against the owners of the Monteverde Inn (Instituto de Vida Sostenible ECOFE Limitada), who blocked the principal access to our property in Cerro Plano, Monteverde. The current situation resurrects a legal case the MCL already won in 2001, against the previous owner of the property now owned by Monteverde Inn. Currently, the MCL filed an injunction, through which we have gained temporary access rights to our property (*medida cautelar*). The owners of Monteverde Inn maintain that they are the owners of the road, and have filed an appeal basically stating that the MCL no longer needs this access anyway now that we have a secondary access through the forest bordering the property of Alvaro López (see #2). It is worth mentioning that this particular legal case, and all of the problems it brings, has very likely prevented us from selling the building. This case is being handled by Ricaute Jiménez.
2. **Exchange of properties of the MCL (former offices in Cerro Plano) and Alvaro Lopez.** The exchange of land between properties of MCL and Mr. Alvaro Lopez in Cerro Plano was completed. This allows the MCL a secondary (NOT primary) access to the back of the property, through the forest. This is important given the current legal case regarding the primary and historical access (see above). To complete this exchange, the MCL had to give about 200 m² of our property in exchange for 14 m² of the property of Mr. López.
3. **Caso Interdicto de Amparo de Posesión contra el Banco Nacional de Costa Rica (Lawsuit related to possession rights, MCL against Banco Nacional de Costa Rica).** This process was won by the MCL and in 2015, payment of the respective costs and professional fees was completed. This case is being handled by Ricaute Jiménez.

- 4. Caso de Demanda del Banco Nacional de Costa Rica contra la ACM (Lawsuit by Banco Nacional de Costa Rica against MCL).** In response to the process won by the MCL (see #3, above), Banco Nacional filed suit against MCL and another adjacent landowner. The foundation of this case is that the MCL's plans overlap with Banco Nacional's plans in the Burrito area (La Fortuna). Banco Nacional is requesting that the MCL cede the approximately 5 hectares of property that overlap with their plans. We have recently submitted our response to this lawsuit, and are awaiting a decision. This case is being handled by Ricaute Jiménez.
- 5. Limits of the BEN and the Santa Elena Reserve.** We reopened the boundaries (*carriles*) between the BEN and the Santa Elena Reserve, so that the Santa Elena Reserve can complete the plan of their property (*plano catastrado*).
- 6. Oldemar Guillen y Vianey Santamaría Case, Rancho Alegre.** This is a situation of conflicting property boundaries (and overlapping plans) between two landowners, Oldemar Guillen and Vianey Santamaria. The MCL's participation has been to make sure that our own property boundaries are respected in the process, and also to support MINAE in clarifying property boundaries in this area. (MINAE must approve the plans, as the area in question is part of the Arenal-Monteverde Protected Area, or ZPAM.)
- 7. INMan-Banco IMPROSA Case.** In recent years we have been awaiting the approval of a court-appointed expert to carry out a topographic field report on the status of the land. At this time, the main actor is COOPELESCA, who acquired the INMan group a few months back. This case is being handled by Ricaute Jiménez.
- 8. Bekom Case.** One of the defendants in this case, which had a favorable ruling for the MCL, has filed an appeal. The case is being reviewed by the Superior Court. This case is being handled by Marco V. Retana.
- 9. Mario Rodríguez–Wilson Badilla Case.** Despite the passing of several years, the court asked the defendant (Mario Rodriguez) to complete the information for a counter lawsuit (mostly pertaining to how other defendants and witnesses should be notified). However, the defendant did not respond in the time allotted, causing the court to reject Mr. Rodriguez's counter claim. A site visit, settlement meetings, and trial are scheduled for February 2016. This case is being handled by Marco V. Retana.
- 10. Hunters in Bekom.** This case ended with Mr. Miguel Jimenez being acquitted on counts of assault and attempted murder of A. Alonso Sánchez and Hernán Chacón, MCL forest guards. However, in recent months the case has been re-opened at the request of the Prosecutor's Office (*Fiscalía*). Ricaute Jiménez is providing support for this case; however, in reality the case is now being handled directly by the *Fiscalía*.
- 11. Hunters and Land-Use Change in San Gerardo.** We followed up on complaints received about the presence of hunters in the San Gerardo area, property of Alexis Torres. Upon inspection of the property, which was conducted by MINAE officials and supported by MCL forest guards, evidence of hunting was indeed found, in the form of traps and bait. In addition, evidence of unauthorized land use change was documented: converting forest to agricultural land (illegal tree cutting). MINAE is responsible for following up on this case; the MCL's principal participation is as a partner and stakeholder in reducing (or eliminating) this type of activity in this area.
- 12. Mario Arguedas.** This case was closed in 1998; however, we were not able to gain title to the land due to mortgage restrictions on the property. We are currently waiting for the restrictions

to expire so that we can request the Agrarian Court of Puntarenas for the compliance statement, and then be able to gain title to the land.

- 13. Olman Castro (Elidieth Vindas).** The MCL's principal objection in this case is the incorrect location of the plans for the property to which Mr. Castro claims to own title. Similarly, the MCL has objected to the location of the property of Mr. Olger Badilla, with whom the MCL has a contract for the sale/purchase of the property. Currently, at the request of the Attorney General's Office, new plans will need to be prepared.
- 14. Purchase of the property of Cesar Santamaría.** Follow-up on the efforts of Mr. Cesar Santamaria Hidalgo to obtain title for his property; once this is complete, the outstanding balance will be paid. Marco V. Retana is handling this case.
- 15. Purchase of the property of Olger Badilla.** Follow-up on the efforts of Mr. Olger Badilla Navarro to obtain title for his property, in order to cancel the outstanding balance. Marco V. Retana is handling this case.
- 16. Melvin González (hunting).** There are no updates for this case.
- 17. Illegal logging in Arenal Volcano National Park.** We continue to follow this case, in which the MCL is a witness.
- 18. Tom Dixon.** We are in the process of registration of properties (*catastro de propiedades*) in the Peñas Blancas Valley and bordering areas belonging to Tom Dixon, CCT, and MCL.
- 19. Información Posesoria José Manuel Cruz (Santos Madrigal Property).** There are no updates in this case. The MCL is a neighboring property.
- 20. Información Posesoria de Roy Campos Solís.** Process of obtaining title to neighboring properties in the San Miguel-Pocosol area, Peñas Blancas, San Ramón, Alajuela. This case does not present a conflict for the MCL.
- 21. Overlapping lands/plans, properties of Rodrigo Valverde (Las Torres).** Given that Mr. Valverde was measuring in order to present new plans of his property, and that initially there were overlapping lands according to the plans of Valverde, CCT, and MCL, we made site visits in order to ground-truth. The various actors are currently in the process of adjusting plans so that they correspond to on-the-ground conditions.
- 22. Trinidad Madrigal.** We are awaiting the sentence in the case of Mr. Madrigal, for carrying arms and resisting arrest. The case of illegal hunting was already dismissed.
- 23. Legal registration (title) of MCL lands.** There is little to report in this area; the MCL continues to analyze strategies for registering and gaining title to its properties, from political strategies to alliances with other organizations (CCT, Guanacaste Dry Forest, MINAE, and others).

Land Purchase

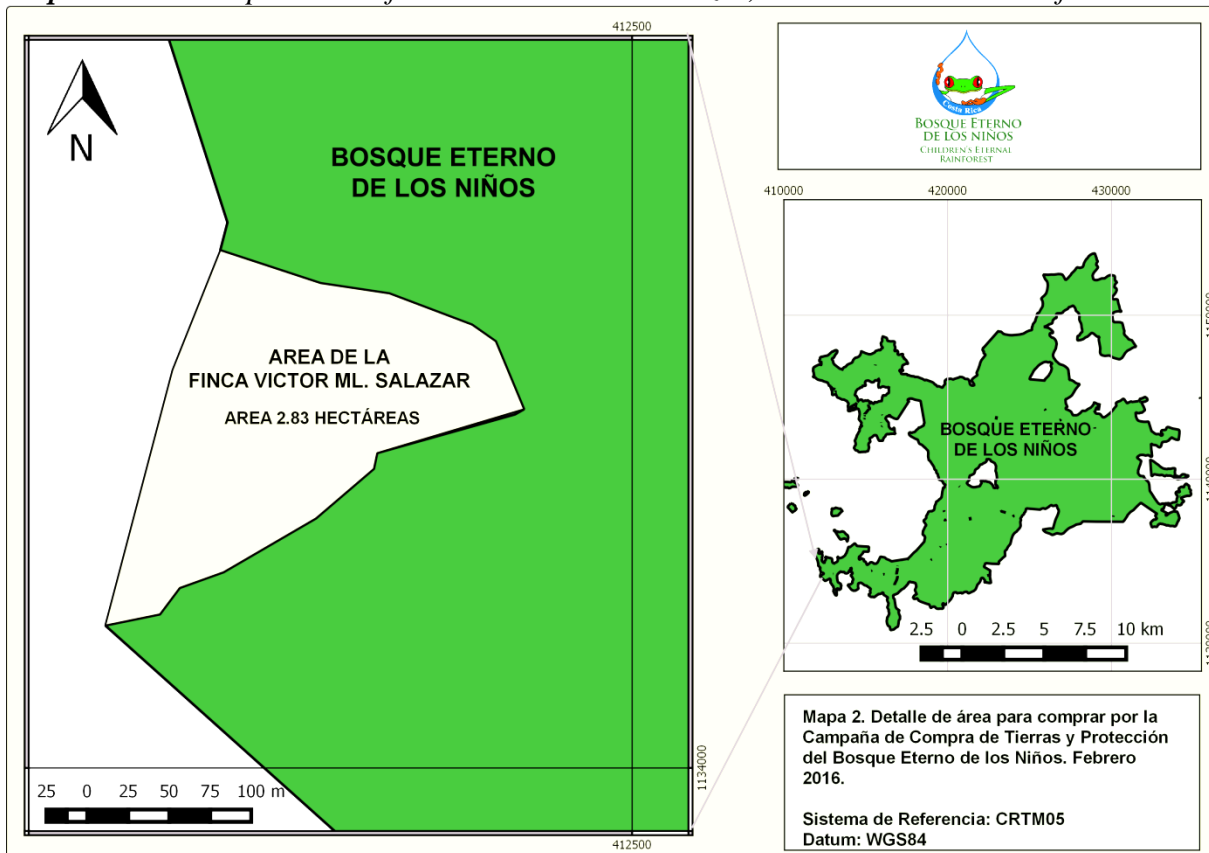
Director of Land Affairs: Yuber Rodríguez

Land purchase in the past few years has primarily been directed at consolidation, in order to better facilitate protection and increase connectivity between the BEN and other protected areas. New land purchase is increasingly difficult, mostly due to the high cost of land and the complexity of fundraising for this purpose.

In 2015, the MCL made efforts to re-open property lines (*carriles*) between the BEN and neighboring farms, in some cases in order to update or correct plans. During this process, we became aware of the opportunity to purchase 2.83 hectares of the property of Víctor Manuel “Memey” Salazar Solórzano, in the Amapala area of San Luis, Guacimal, Puntarenas. This property is strategic for the MCL for several reasons. It simplifies the boundary of the BEN in this area, which means that in the future we will save both labor and money on maintenance. It is also part of the Bellbird Biological Corridor, which has been identified by the MCL as a priority for conservation and new land acquisition.

Thanks to the willingness of Mr. Salazar to negotiate this part of his property, and to the economic support by Friends of the Rainforest and Kinderregenwald Deutschland e.V. (Germany), we hope to complete the purchase of this important piece of property in the coming days.

Map 1. Area to be purchased from Víctor Manuel Salazar, in relation to the rest of the BEN.



Payment for Environmental Services (PSA)

Director of Land Affairs: Yuber Rodríguez

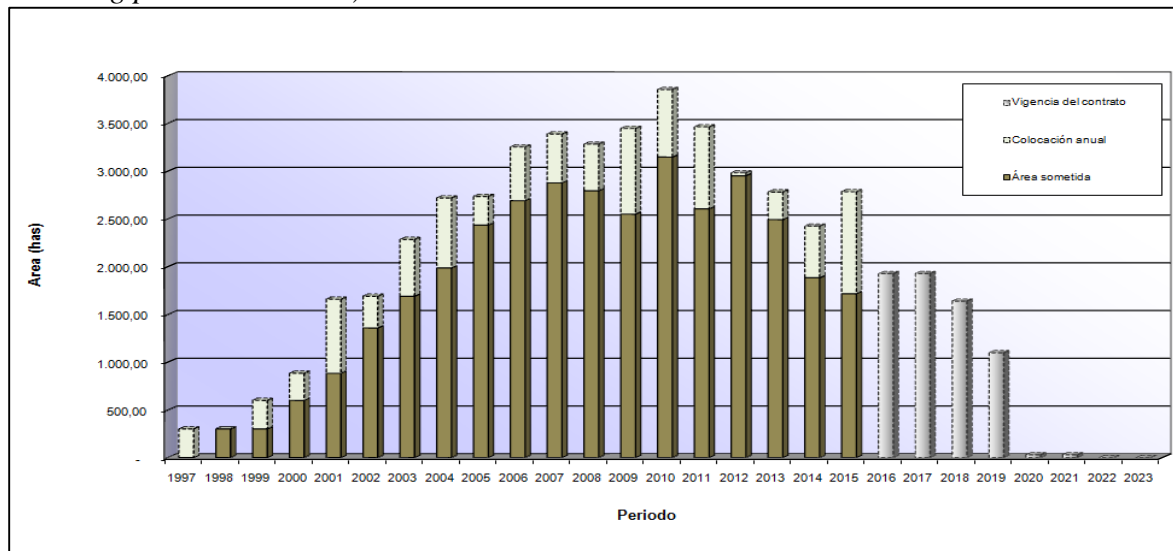
The Payment for Environmental Services program began in 1997, and since its inception the MCL has participated in this program as a way to generate resources for the organization and its activities. At one time, PSA was the principal source of income for the MCL. During fiscal year 2014-2015, PSA made up 38% of the gross income of the organization.

Most PSA contracts are for 5 years. Every year some contracts expire, and every year new properties are placed in PSA. The total quantity of properties (hectares) placed in PSA in a given year is the **annual placement**. The payments received by the MCL in any given year, correspond to the **total (cumulative) placement** of properties in PSA over the past 5 years. For example, in 2015, the MCL receives payments corresponding to the total placement in PSA for 2011, 2012, 2013, 2014, and 2015.

The total (cumulative) placement in PSA was the highest from 2006 to 2011, when it exceeded 3,000 hectares (Figure 2). The greatest total placement was achieved in 2010, with more than 3,800 total hectares. The total placement for 2015 continues to be slightly lower, mostly due to poor annual placements in 2012 and 2013.

However, **in 2015 the MCL achieved the highest annual placement** that it has had during our 19 years of participation in the PSA program, with 1,068 hectares for the 2015 period. This allowed us to achieve a total placement of 2,780 total hectares, with a **net gain of 361 hectares** (net gain is the area corresponding to new placements, less the area corresponding to contracts that expire this year).

Figure 2. Placement of land in the Payment for Environmental Services (PSA) program (not including private contracts).

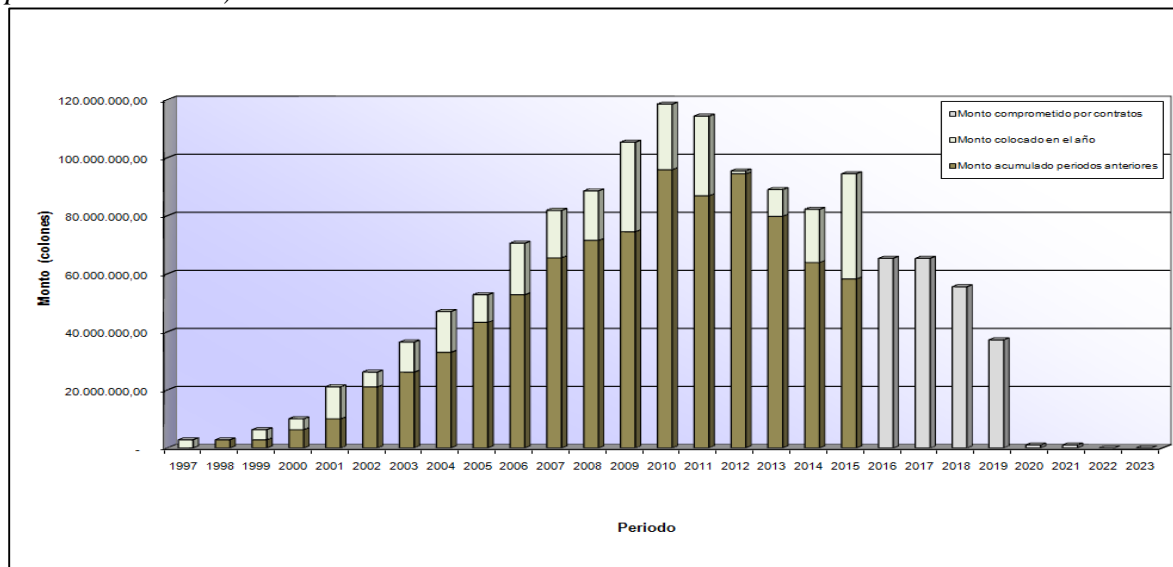


The 2015 period also qualifies as the period of greatest economic growth, with an estimated 36 million colones corresponding to just this one year (Figure 3). In terms of the cumulative income,

2015 is surpassed only by 2009, 2010, and 2011. In 2015, we can estimate a net gain of about 12 million colones (again, the net gain is the gain due to new placements, less the amount corresponding to contracts that expired this year).

The excellent placement achieved in 2015 is the result of compliance with conditions and requirements of 17 pre-applications submitted in the three regional offices of FONAFIFO (San José Occidental, San Carlos y Cañas). For 2016, we are considering close to 25 pre-applications for PSA, with an estimated area of more than 1,800 hectares. The map below shoes the details of the properties placed in PSA over the previous 5 years (Map 2).

Figure 3. *Income related to Payment for Environmental Services (PSA) program (not including private contracts).*



Neighboring farms

We are in the third year of an agreement between the MCL and FONAFIFO, in which the MCL acts as a facilitator in the process of incorporating neighboring farms in the PSA program. This agreement allows the MCL to involve communities and neighbors, thereby promoting the conservation of natural resources as well as good relations with our neighbors. In these cases, the MCL receives a small percentage, mainly to cover the overhead costs involved. Another positive aspect of this agreement is that we have improved relations with the regional offices, which means that we have better access to channels for approval of PSA for our own properties.

In 2015, the MCL submitted a total of 48 pre-applications for PSA, 22 of which were for neighboring properties. Of these, 9 neighboring properties were approved, for a total area of 355 hectares belonging to neighboring farms placed in PSA in 2015 (Table 4). For 2016, we estimate a total of 50 pre-applications, of which 25 correspond to neighboring properties.

Table 4. List of private farms placed in PSA for 2015.

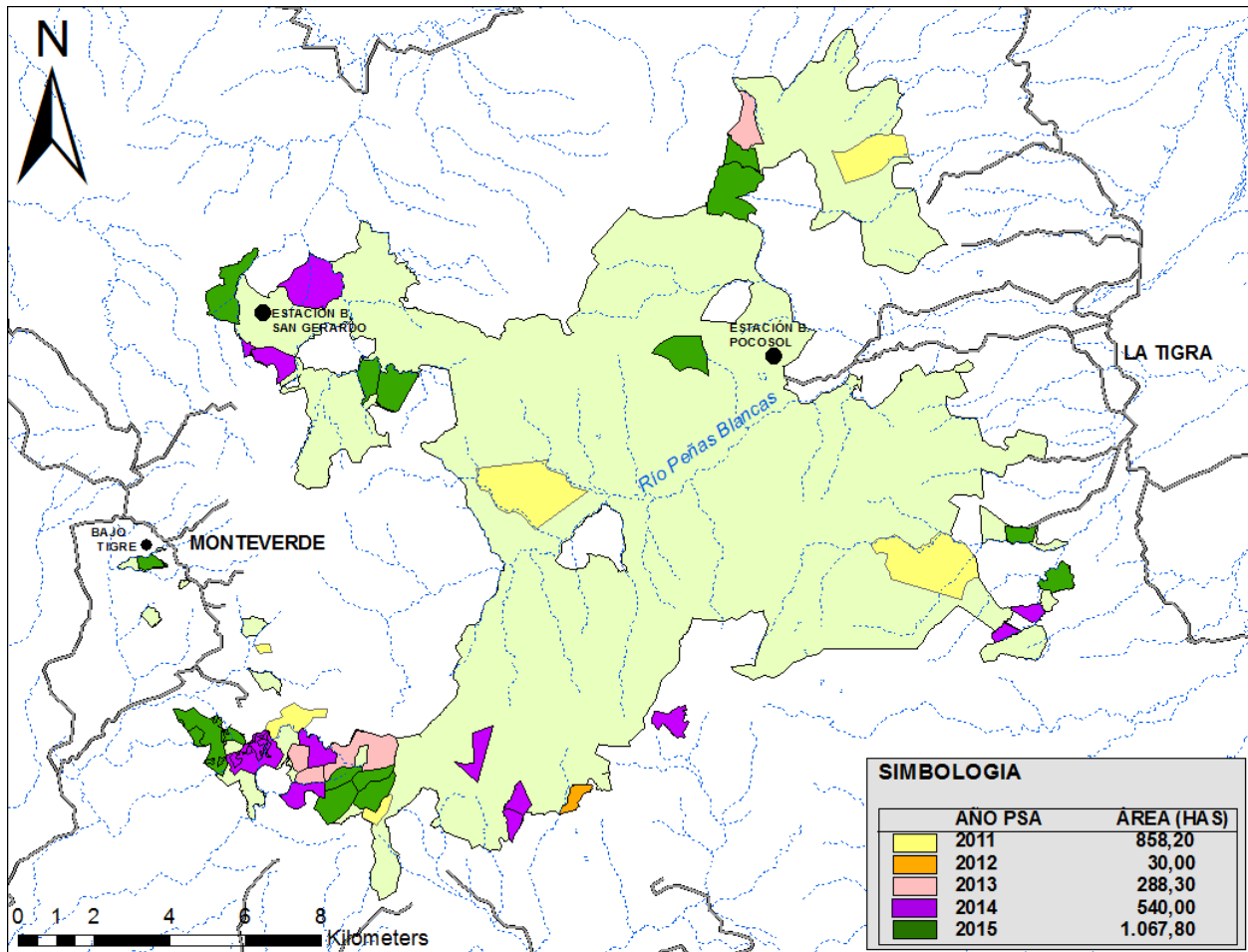
Owner	Location of property	PSA program	Area (has)
Adrián Monge Rodríguez	Turín, La Sierra, Abangares, Guanacaste	Protección de Bosque	38,7
Fabrizio Camacho y Karen Gordon	San Luis, Monteverde, Puntarenas	Protección de Bosque	8,8
Josefina Arce Rojas	Tierras Morenas, Tilarán, Guanacaste	Protección de Bosque	35,5
Josefina Arce Rojas	Tierras Morenas, Tilarán, Guanacaste	Protección de Bosque	49,2
Julieta Espinoza	La Tigra, San Carlos, Alajuela	Protección de Bosque	19,9
Labrador Lindora	Monteverde, Puntarenas	Protección de Bosque	50,0
Lovi Montegalan S.A.	El Camibar, Los Chiles, Alajuela	Protección de Bosque	111,7
Mariano Arguedas Méndez	Los Llanos, Monteverde, Puntarenas	Protección de Bosque	29,4
Máximo Ramírez Gonzalez	San Gerardo, Peñas Blancas, San Ramón, Alajuela	Protección de Bosque	12,0
Total			355.2

Private contracts

The MCL continues private contracts with two hydroelectric companies, Inversiones La Manguera (INMan) and CONELECTRICAS. At present, due to disagreements with the MCL, INMan has requested the legal nullification of the contract. In the meantime, they have continued making biannually payments. INMan is now owned by COOPELESCA.

In the case of CONELECTRICAS, in 2015 they made their 7th payment, and will make the 8th payment in July 2016 as per the contract.

Map 2. MCL properties currently in Payment for Environmental Services (PSA).





Maintenance and Land Affairs: Inspection of limits with neighboring properties.



Working together: Protection and Maintenance.



New line trimmers, thanks to Friends of the Rainforest



Environmental Education, field trip to Pocosol Station.

FIELD STATIONS, TRAILS, AND VISITOR CENTERS

Bajo del Tigre

Visitation

In Bajo del Tigre, total visitation in 2015 was similar to 2014, and slightly higher than 2012 and 2013. As is true throughout the tourism industry, there is a pattern of high and low months. The months with the highest visitation tend to be February, March, July, August, and December. The months with the lowest visitation are September and October. We can take advantage of this pattern by scheduling maintenance work and personnel vacation time during the low season. We should also try to attract greater visitation by academic and student groups during May and June, which are typically high months for student groups in Monteverde.

Figure 4. Bajo del Tigre, monthly entrances for night hikes, 2012 to 2015.

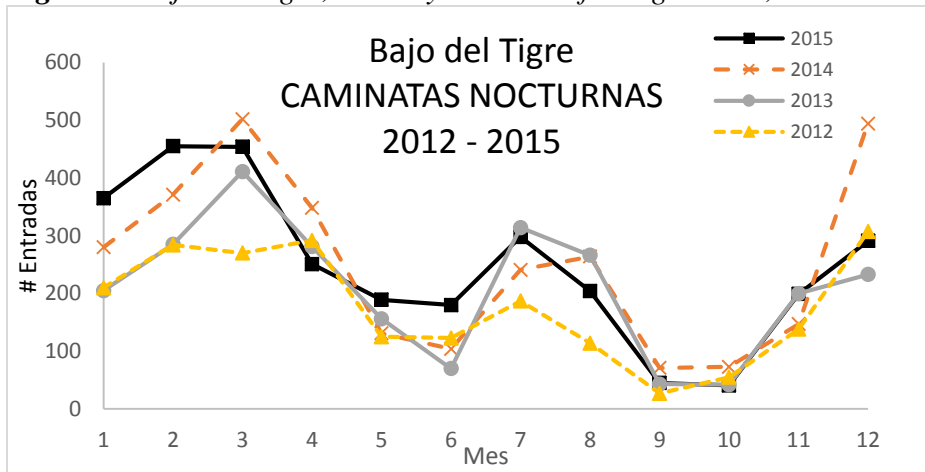
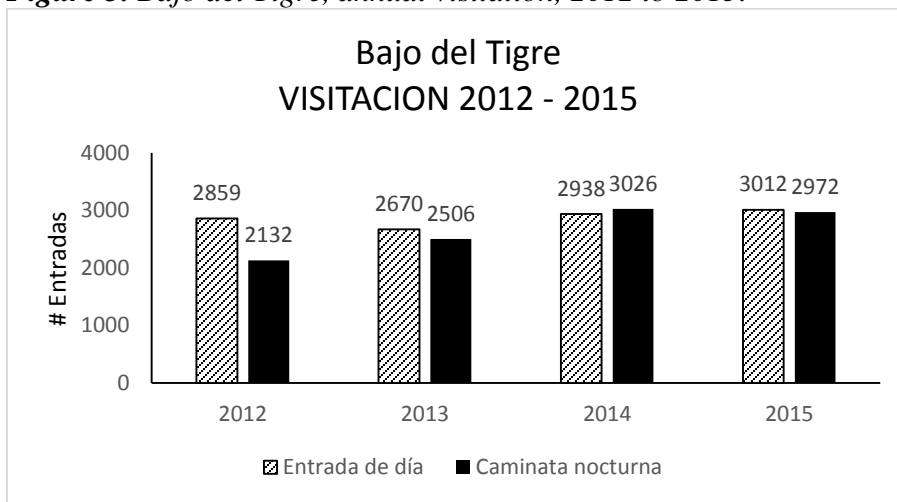


Figure 5. Bajo del Tigre, annual visitation, 2012 to 2015.



Installation of safety railings

In November 2015, we began the installation of safety railings on the trails at Bajo del Tigre. This project was made possible by a generous anonymous donation for the purchase of the recycled plastic posts and railings (“madera plástica”).

San Gerardo Station

Visitation

Visitation at the San Gerardo Station, measured in “bed-nights”, was slightly higher in 2015 than in 2014. [Bed-nights is the number of visitors multiplied by the number of nights they stayed; for example, 2 guests staying for 3 nights equals 6 bed-nights.]

Visitation at San Gerardo in November 2015 was lower than in previous years; we took advantage of this to work on repairing the foundation of the station (see below).

Figure 6. San Gerardo Station, monthly occupancy (bed-nights), 2012 to 2015.

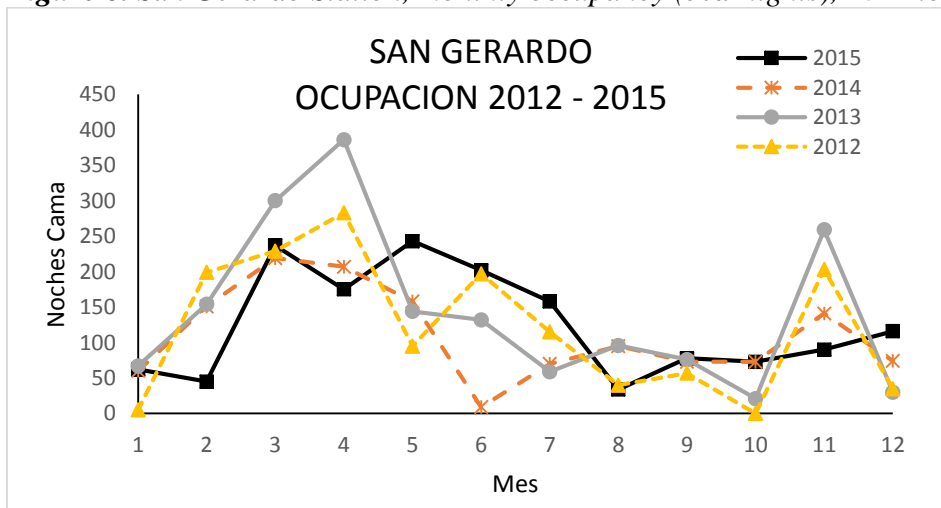
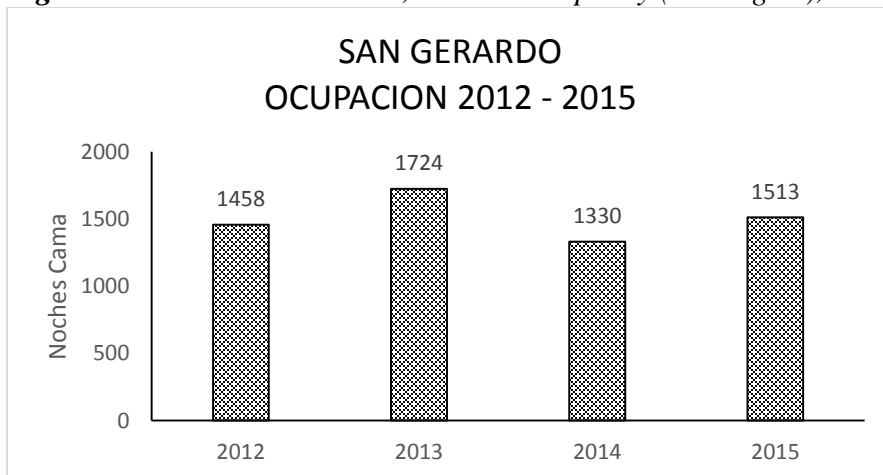


Figure 7. San Gerardo Station, annual occupancy (bed-nights), 2012 to 2015.



Maintenance at San Gerardo

In 2015, a number of important maintenance tasks were carried out at San Gerardo, including:

- Trail maintenance and improvements (widening, drainage, clearing branches)
- Cleaning the electric lines
- Painting the station

Foundation / “Basas”

Thanks to funds donated by Children’s Tropical Rainforests, United Kingdom, we are in the process of replacing the foundation (“basas”) of the station at San Gerardo. For this project we have hired an outside contractor, Orlando Reyes; the work of Eduin Méndez and Geovanny González has also been indispensable. The external foundations have all been replaced. In the process of this project, we have also replaced the floors of the laundry room, the station managers’ room, and the porch, which were all in poor repair. The internal foundations remain to be installed; this work is scheduled for the coming months.

Pocosol Station

Visitation

Occupancy of the Pocosol Station was lower in 2015 than in the three preceding years. In 2015, we did not receive several groups that had visited the station in years past. For example, in 2015 the Organization for Tropical Studies (OTS) and the travel agency Natural Solutions did not send any groups to Pocosol, although they sent large groups in previous years. The travel agency Obras Globales (Global Works), which sent several volunteer groups to Pocosol in 2012 and 2013, only sent one moderate-sized group in 2015. We must follow up with these agencies in order to understand the reasons behind this change, and see what we can do to encourage them to return to Pocosol.

It is possible that not offering the long hike between Monteverde and Pocosol is affecting reservation at the Pocosol Station. This hike is still offered to groups with an academic or research purpose, in coordination with the Tropical Science Center (TSC), but the hike is not open to the public. We are in the process of exploring, together with the TSC, how we can continue to offer this hike in an organized, safe, and economically sustainable fashion.

We also know that access to the station has affected visitation in some cases (for example, the travel agencies Ecoterra and Travel to Nature); for this reason, we are working on significant improvements to the road to Pocosol (see below).

Figure 8. Pocosol Station, monthly occupancy (bed-nights), 2012 to 2015.

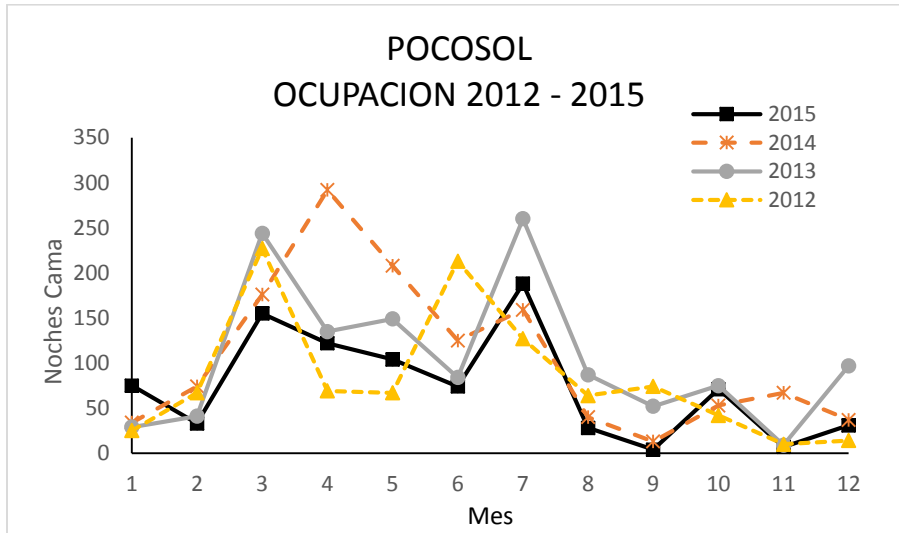
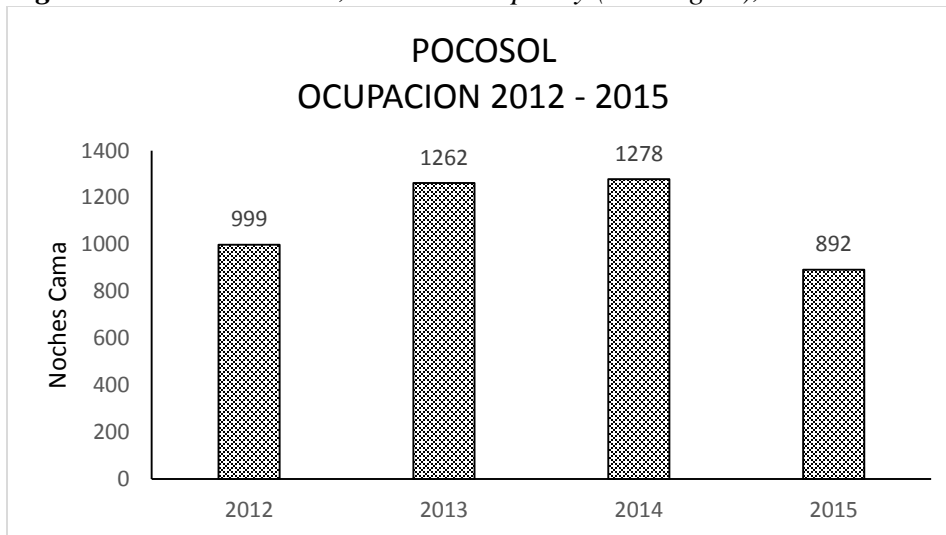


Figure 9. Pocosol Station, annual occupancy (bed-nights), 2012 to 2015.



Maintenance at Pocosol

In 2015, a number of important maintenance tasks were carried out at Pocosol, including:

- Trail maintenance and improvements (widening, drainages, cutting and removing branches, re-routing trails due to landslides, installation of cement block stairs, and repair of bridges)
- Station and kitchen were varnished
- Improvements to drinking water catchment
- Signage along all trails open to the public
- Creation of a new trail, connecting the Zamia and Principal trails, for short hikes and in particular night hikes. This trail will be called the Sendero Henry Murillo, in honor and memory of our late coworker.

Road to Pocosal

Thanks to a generous anonymous donation, we have begun important improvements in the road to Pocosal. In January 2016, machinery on loan from the Municipality helped level the parts of the road to be repaired. Beginning February 1, we will begin paving two tracks in the most critical areas, just before arriving at the station (about 300 meters total).

Slope stability study

In January 2016, we hired the company INGEOTEC to carry out a geotechnical and slope stability study at Pocosal, due to fissures that have appeared in the soil beneath the classroom. We hope to have the results of this study by mid-February. Many thanks to Jorge and Esteban Maroto for their help in coordinating this project.

Finca Steller

Personnel change

After nearly 10 years with the MCL, Luz Mery Vásquez has left us to pursue other priorities. Beginning on January 18, 2016, Fabiola Peralta has joined the team as Administrative Assistant in the Finca Steller office.

Signage

In September 2015, we completed new signage near the Finca Steller office, including a large sign at the turnoff on the highway, and smaller “indicator” signs on the road to Steller. We still need to update the rest of the signs, not only in La Tigra but in Monteverde as well, in order to have attractive, consistent signage throughout the BEN.

Reforestation and Nursery

The Finca Steller nursery is currently producing 24 species of native trees, which are either sold or donated to local individuals or businesses. (In reality the sale price is symbolic, at just 300 colones per tree.) In 2015, we sold 541 trees and donated 260, for a grand total of 801 trees planted in the local community.

Reforestation activities:

- El Progreso School: Talk on “Trees and their importance” and planting of 50 trees in the community of El Progreso, with participation by 45 students and teachers (June 2015).
- ASADA ASUACOM: Planted 300 trees (donated by ICE), with participation by 80 students and 4 teachers from the Valle Azul, El Progreso, Pueblo Nuevo, and Los Criques schools, and in coordination with local businesses Casa Luna, Ecoterra, Sixt Rent a Car, and Costa Rican Trails (September 2015).
- Finca Steller: Planted 100 trees (donated by ICE), with participation by 30 employees from Casa Luna, Ecoterra, Sixt Rent a Car, Costa Rican Trails, and BEN staff (September 2015).
- Finca Steller: Talk on “BEN and wildlife monitoring using camera traps,” and planting of 50 trees with a group of 50 international visitors (October 2015).
- ASADA, San Jose de La Tigra: Planted 100 trees with students from the San Jose de La Tigra School and ASADA staff. The MCL donated 15 of the trees planted (November 2015).

- Finca Steller: Planted 15 trees with students from the Las Palmas School (November 2015).
- Finca Steller: Planted 63 trees with the Environmental Brigade of the La Tigra School, with participation by 25 students and teachers (November 2015).

Table 5. *Trees distributed by the Finca Steller nursery in 2015.*

Quantity	Name of recipient	Description
17	Steven Farrell, Finca Luna Nueva	Donation
28	Dimas Méndez	Sale
30	Ilona y James Biddington	Donation
252	Cerro de Oro S.A.	Sale
50	CONELECTRICAS	Sale
100	MINAE San Ramón	Sale
15	Yeudi, CompuSistema Norte	Donation
60	Escuela la Tigra (Festival Ecológico y Artístico)	Donation
28	Escuela La Lucha	Donation
15	Acueducto San Juan	Donation
50	Escuela El Progreso (Actividad de reforestación)	Donation
15	Acueducto Los Criques	Donation
46	Miguel Herrera	Sale
65	Acueducto San José de La Tigra	Sale
30	Jorge Ramírez	Donation

DEPARTMENTS AND PROGRAMS

Environmental Education

Coordinator: Carolina Brizuela

Our Environmental Education Coordinator, Carolina Brizuela, has been with the MCL since August 2014. The funding for Carolina's position comes from a generous anonymous donation, which covers the salary of an environmental educator in the La Tigra area for 5 years. We are currently in the fourth of the five years; securing funding to cover this important position is one of the organization's fundraising priorities.

Environmental education is the "forest protection of tomorrow". The program aims to instill and reinforce the values of respect and love for nature, through lectures, workshops, tours, and educational activities. By increasing participants' environmental awareness, we also promote conservation and protection of natural resources surrounding the BEN and throughout Costa Rica (and the world).

Workshops: Having a full-time environmental educator allows for quality curriculum development, ensuring rigorous content as well as continuity from one school (and one year) to the next. Workshops were conducted during (at least) monthly visits to each of the schools. In total, close to 2,400 students and 118 teachers participated from schools in La Tigra and the surrounding area, including the following schools: La Tigra, San Jorge, Cerritos, Procopio Gamboa, Los Ángeles, Las Palmas, San Juan, Pueblo Nuevo, San José de la Tigra, San Miguel, El Progreso, Valle Azul, Los Criques, Emilio Castro Gómez, Cerro Alegre, Linda Vista, San Isidro, and Mundo de Niños.

Workshop topics:

- Wildlife conservation law
- Let's recycle, all together!
- Worm compost project
- Water for life
- Energy
- The importance of trees
- Helping my community
- Biodiversity and ecosystems of Costa Rica
- Biodiversity and monitoring of the BEN
- The relationship of living beings with their environment
- Watersheds
- World oceans day
- Exploring the flora and fauna of your community and of the BEN
- Felines of Costa Rica
- Guardians of nature
- Solid waste management
- Wildlife monitoring in the BEN
- Environmental education program and wildlife monitoring

Field Trips: Field trips are an essential way to motivate and encourage children, strengthening their connection with the natural environment and with the BEN itself. In 2015, we carried out five field trips to Finca Steller Visitor Center, with San Miguel and Las Palmas schools and the Environmental Brigade from the La Tigra School. We also achieved two field trips to Pocosol Station, with students and adults from the Emilio Castro Gomez and La Tigra schools. In all, 121 students, 15 teachers, and five parents visited the BEN during field trips in 2015. The trips to Pocosol Station were possible in large part thanks to Carolina's initiative in seeking donations from companies like Hotel Fortuna, Desafio Tours, and Ecoterra.

Reforestation: In collaboration with organizations in the San Carlos area, two tree planting activities were conducted in aquifer recharge areas within and around the BEN. The first was with the Valle Azul, El Progreso, Pueblo Nuevo, and Los Criques schools, together with Hotel Casa Luna, Ecoterra, Sixt Rent-a-Car, and Costa Rican Trails, involving a total of 80 students and 4 teachers. The second was in coordination with COORENACER S.J.R.L., with the San Jose de La Tigra School, with participation by 65 students and 4 teachers.

Community outreach: Outreach activities were also conducted in communities and institutions as a way to promote awareness and cultural exchange.

Table 6. Environmental Education Program: Community outreach activities, 2015.

Activity	Institution	Participation
BEN and wildlife monitoring using camera traps	UNED	13
BEN and wildlife monitoring using camera traps	U. Latina	8
BEN Environmental Education Program	Chachagua	15
BEN and wildlife monitoring using camera traps	San José de La Tigra	15
Solid waste management	La Tigra High School	15
Environmental Fair: Everyone for the environment	Valle Azul Community	300
III Ecological and Art Festival: "Toward a healthy coexistence between all living beings"	La Tigra	400
Solid waste management (3 workshops)	CONELECTRICAS	55
BEN and wildlife monitoring using camera traps; Reforestation	Centro Espiral Mana	20
Cultural exchange, presentation about BEN, Environmental Education Program, and rural tourism (5 workshops, with participation by local students and visitors from the USA and Germany)	San Jorge School	43 students + 95 visitors

Environmental Education Activities in Monteverde: Although the MCL currently does not have a formal environmental education program in Monteverde, we try to participate to the best of our ability and resources in this important area. Thanks largely to the initiative and motivation of Leslie Corrales and Giselle Rodriguez, the MCL was able to contribute in various ways in environmental education in the community of Monteverde during 2015:

- **Reduce, reuse, recycle:**
 - Making waste baskets from recycled plastic bottles: Workshops with students from the Rafael Arguedas Herrera School in Cerro Plano.

- Recycled paper: Making new paper from old, with students from the Blue Valley School (Escazú), Rafael Arguedas Herrera School (Cerro Plano), and the Cloud Forest School (Monteverde).
 - **Participation in special days and events**, including Farmers' Day, Arbor Day, and Water day, in collaboration with different schools and organizations.
 - **CEAM (Monteverde Environmental Education Commission)**: The MCL is an active member of CEAM, and participated in various activities including the Environmental Fair and vacation workshops for local students.
-

Protection and Control

Coordinator: Hernán Chacón

Protection of the BEN is possible thanks to the contribution of many individuals and organizations. The daily work is performed in conjunction with other BEN staff, from Maintenance and Environmental Education, to Administration and Stations. We are grateful for the support of other organizations through the inter-institutional committee, which includes participants from SINAC/MINAE, law enforcement, firefighters, Red Cross, COVIRENAS, OIJ, and others.

Protection works closely with rescue centers like Asis, Zoo Ave, Jaguar, La Marina, and Turrúcares de Alajuela, to which we transfer wildlife that for one reason or another end up in our custody. We also have the support of SENASA, both in Grecia and Esparza, to help us deal with the ongoing issue of hunting dogs found in the BEN.

We have continued to follow up on lawsuits related to the seizure of timber, birds, and hunting dogs; MCL staff are often key witnesses in these processes (although the police or MINAE are the ones who actually file the complaint). Finally, Protection staff continue with ongoing projects such as camera traps, earthworm compost, recycling, and support of the Bandera Azul program.

“ACTAS DE HALLAZGO” (HUNTING DOGS): Protection staff typically find between one and three hunting dogs in the BEN each month. Most are found after having been abandoned by their owners, who flee the scene in order to avoid being caught themselves. In these cases (where the dog is found without its owner), the animal is removed from the site, the proper paperwork is completed, and the animal is transferred to the proper location, typically in coordination with SENASA.

VOLUNTARY SURRENDER: Sometimes, owners decide to turn in their pet(s) in order to avoid problems with wildlife laws. Neighbors also contact us in cases where animals are found – or are problematic – in which case we also assist in taking the appropriate action.

Table 7. Confiscations made by Protection and Control, 2015.

Name	Description of confiscated item(s)	Place of residence
Yimer Jiménez Sánchez	3 dogs, 2 flashlights, 1 machete	San Isidro de Peñas Blancas
Jorge Galeano Prado	1 firearm	Las Rocas de los Ángeles de SR
Yolanda Vargas Vargas	1 ocelot (<i>Leopardus pardalis</i>)	Agua Azul de Fortuna
Carlos Leitón	1 22-gauge shotgun and 10 rounds	Bajo Córdoba de San Ramón
Cristóbal Morales Rodríguez Luis Diego Vargas Rodríguez	3 dogs, 2 machetes, 1 flashlight	Volio de San Ramón y Palmira de Zarcero
Gerardo Masis Gómez	2 White-collared Seedeaters (<i>Sporophila torqueola</i>)	La Cruz de Peñas Blancas
Francisco Villarreal Jimenez	15 orchids	Naranjo de Alajuela
Ileana Campos Prado	11 orchids	Acosta San José
Rigoberto Hernandez Cordero	One .22 revolver and 5 rounds	San Juan de Tibás
Alcides Morales López	One 9mm pistol and 11 rounds	Aguas Claras de Upala
Erick Alpizar Salas	5,500 inches of wood	Rocas, Los Ángeles de San Ramón
Alberto Víquez Castillo	One 18-gauge shotgun, 33 rounds	Palmares, Alajuela
Alfonso Mendez Vargas	2 rifles caliber 20 and 22, 2 rounds	San José de La Tigra
Edgar Chávez Salas	1 <i>macana</i> , 1 shovel, 1 pick	San Francisco de Peñas Blancas

Table 8. Voluntary surrenders, 2015.

Name	Place of residence	Description
Félix Herrera Cruz	Valle Azul	White-tailed Deer (1)
Edgar Chávez Salas	San Francisco de PB	Coati (1)
Antonio Sibaja Morena	Santa Gertrudis de PB	Spectacled owl (1)
José Eladio Flores Gonzales	La Lucha (La Tigra)	Howler monkey (1)
Ana Lorena Rodriguez Villegas	Santa Clara, San Carlos	Coati (1)
Jessica Rodriguez Rojas	La Fortuna, San Carlos	Toucan (1)
Carlos Luis Araya	Valle Azul	Toucan (1)
Margorie Monestel Cordoncillo	Santa Gertrudis de PB	Coatis (2)
Rigoberto Vega Arce	Linda Vista	Red-lored Parrot (1)
Laura Cordero Fallas	San Isidro de PB	Sloth (1)
Luis Jiménez Sandí	La Tigra	Raccoon (1)

Maintenance and Operations

Coordinator: Luis Solano

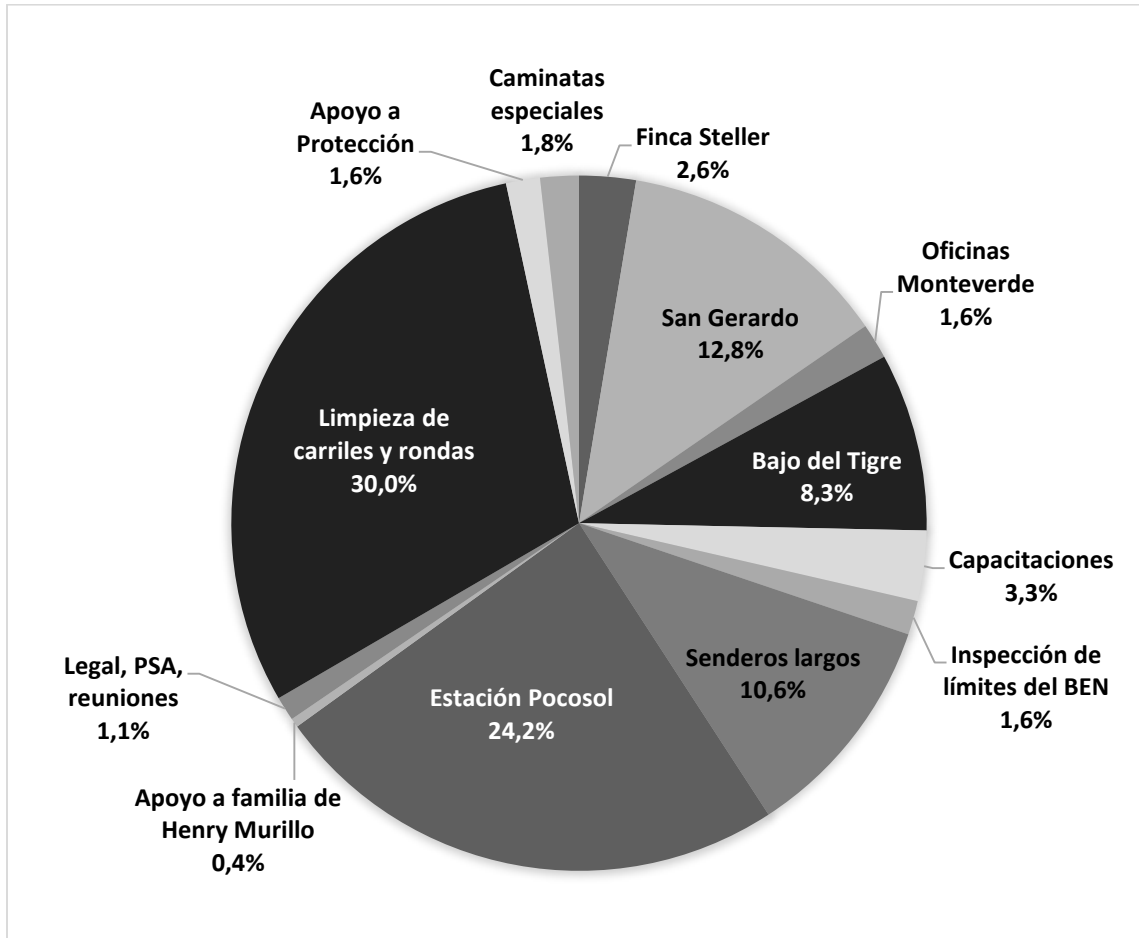
In 2015, the Maintenance and Operations program was composed of 4 staff from January to March, and 5 staff from April to December. The activities of this program are essential for the protection of BEN, especially in terms of maintaining limits with neighboring properties by clearing property lines, making or repairing fences. Maintenance staff work throughout the BEN, performing various tasks including but not limited to:

- Inspection of BEN property boundaries
- Maintenance of property boundaries, including fences and other divisions between BEN and neighboring properties
- Trail maintenance and improvement, at visitation centers as well as long trails
- Station, office, and visitation center infrastructure and maintenance
- Support in legal processes, payment for environmental services, and other documents
- Support in topographic measurements and attainment of plans
- Support to Control and Protection, and other programs, as needed

In addition to the improvements made at field stations and visitation centers (which are described in each respective section), some of the principal achievements of the Maintenance and Operations program in 2015 include:

- Maintenance of long trails in the BEN, including: Sendero Pocosol–Eladio’s, Sendero San Gerardo–El Castillo, Sendero Cerritos–Bekom, Sendero San Bosco–Parque Nacional Arenal, Fila Delio Herrera, Sendero Cubano, Sendero Juan González, Sendero Fernando Villalobos, Sendero Leonel Hernandez–Casa Piedra, Sendero Pocosol–Tinajo–Quebrada Gata, Finca Miguel Angel Salazar. Although most of these trails are not open to the public, they are important access routes for BEN personnel and in case of emergency.
- Maintenance of property boundaries in the most vulnerable/problematic areas of the BEN, including: Cerritos (La Manguera), Pocosol (Corrales y Conelectricas), El Burrito (Banco Nacional), Arancibia, San Luis de Monteverde, Los Perdidos (Parque Nacional Arenal), Rancho Alegre, Mirador San Gerardo, Eulogio Jimenez. In particular, we defined and cleared the property boundary between the BEN and the Santa Elena Reserve, and in the Amapala area.
- Training in the use of Global Positioning Systems (GPS) and Geographic Information Systems (GIS), in order to improve procedures and documentation of land tenure. In addition to facilitating legal and technical analysis, the use of GIS allows us to elaborate quality maps of the BEN.

Figure 10. Summary of Maintenance and Operations Program work in 2015.





New signage at Finca Steller.



Visit from photographer Markus Mauthe. (Photo: M. Mauthe)



Repairs on the road to Pocosol Station



Environmental Education: Reforestation



Green-eyed frog (*Lithobates vibicarius*) and emerald glass frog (*Espadarana prosoblepon*), near the Wilford camp. Photos by Luis Solano.

RESEARCH

In order to protect the forest, we must first understand the forest. Furthermore, research (especially long-term research) brings resources and visitors to the BEN. In spite of the fact that the BEN is one of the most incredible natural laboratories imaginable, it has received relatively little scientific study. This is something we must seek to change, and increasing research in the BEN is on the list of high priorities established by the Board.

The majority of the volume of current research projects in the BEN is by university students from the CIEE Tropical Ecology and Conservation and EAP programs, who conduct their projects in Bajo del Tigre. These short-term research projects benefit the BEN because they generate baseline data, which in theory the MCL receives when the students submit their final research reports.

In 2015, Sarah Amundrun, a Ph.D. student from the University of British Columbia, conducted her research on fauna inhabiting bromeliads in Bajo del Tigre, San Gerardo, and Pocosol. Sarah's major professor, Diana Srivastava, has other research projects in Costa Rica, primarily in the ACG.

Finally, we continue documenting the fauna of the BEN through the use of camera traps, and by participating in the Christmas Bird Count each year. One of our goals for 2016 is to establish a list of fauna for each sector, not only so that visitors can access this information but also in order to attract researchers.

Table 9. Summary of research carried out in the BEN, 2015.

Investigador	Investigación	Institución	Sector
Fiona Chan	Monteverde squirrels: food selection in 2 different environments	CIEE Tropical Ecology & Conservation	Bajo Tigre
R. Blake Johnson	Neighbor-stranger discrimination in territorial White-eared Ground sparrows (<i>Melospiza leucotis</i>)	CIEE Tropical Ecology & Conservation	Bajo Tigre
Dalton Brauer	Edge effects and bird species in tropical premontane forest fragments	CIEE Tropical Ecology & Conservation	Bajo Tigre
Aspen Kremer	Floral presentation of <i>Mucuna urens</i> (Fabaceae) and visitation by Neotropical bats	CIEE Tropical Ecology & Conservation	Bajo Tigre
Carson Lyness	Human land use type & ectoparasite loads of cloud forest mice	CIEE Tropical Ecology & Conservation	Bajo Tigre
Alison Montiel	Do White-faced Capuchin calls and behaviors have patterns? Analyzing everyday communication among <i>Ceb. capucinus</i>	CIEE Tropical Ecology & Conservation	Bajo Tigre
Anna Nordseth	Comparing seed dispersal in regeneration large and small forest patches	CIEE Tropical Ecology & Conservation	Bajo Tigre
Nicole Reber	Hummingbird feeders do not interfere with visitation on a native Costa Rican plant, <i>Stachytarpheta frantzii</i> (Verbenaceae), along a disturbance gradient	CIEE Tropical Ecology & Conservation	Bajo Tigre

Jonah Reenders	Impact of edge effect on Neotropical montane terrestrial mammal species richness	CIEE Tropical Ecology & Conservation	Bajo Tigre
Meghan Schrik	Butterfly diversity and distribution along an altitudinal gradient in a Neotropical cloud forest	CIEE Tropical Ecology & Conservation	Bajo Tigre
Cassandra Vaniotis	Does worker size have an effect on the amount of minimas riding on a leaf carried by a leaf cutter ant?	CIEE Tropical Ecology & Conservation	Bajo Tigre
Cameryn Brock	Bird identification	EAP	Bajo Tigre
Lauren Chacho	Diversity and abundance of pulmonates in the Monteverde Cloud Forest	EAP	Bajo Tigre
Hailey Davis	Euglossine bee diversity along a gradient of disturbance within a lifezone	EAP	Bajo Tigre
Emily Harwitz	Is there a correlation between altitude and degree of floral ant-repellence?	EAP	Bajo Tigre
Kyung Min Lee	Home ranges and routes of White-faced monkey troops in Monteverde	EAP	Bajo Tigre
John Cossel	Acquisition of digital photos and audio files of the amphibians of Costa Rica	Northwest Nazarene University	S. Gerardo
Sarah Amundrud	Effects of climate and altitudinal gradient on the fauna inhabiting bromeliads in Monteverde	University of British Columbia	Bajo Tigre, S. Gerardo, Pocosol
Samuel Kraft, Labeeb Ahmed, Jason Chang	Participatory mapping as a means of ground-truthing habitat loss in Costa Rica	University of Maryland, Baltimore County	Bajo Tigre
Kazuhiko Sakurai	Ecological study of weevils in the family Attelabidae and related families	University of Seijo, Japan, and UCR	Bajo Tigre
Adonay Jiménez	Bird inventory of Finca Steller	Universidad Nacional de Costa Rica	Finca Steller

VOLUNTEERS

Volunteers with the MCL help with a variety of projects and organizational needs. We are currently the process of revamping the volunteer program, with the goal of developing a program that is mutually beneficial to the MCL and the volunteer. In 2015, we had 10 volunteers, who helped in all areas of the BEN. In addition, we had the support of the employees of Cabañas Los Pinos, who worked in San Gerardo on two occasions as part of the hotel's community service program.

Table 10. Summary of volunteers in 2015.

Name	Country	Time	Area / Projects
Theresa Schröder	Germany	2 months	S. Gerardo, Bajo Tigre, Monteverde
Cody Kaduce	USA	3 weeks	Reforestation
Anne de Beaumont	France	2 weeks	La Tigra
Kelsey Demianiuk	USA	1 month	Monteverde
Allison Corrales F.	Costa Rica	30 hours (CEC)	Monteverde
Lauren Dykman	USA	1 month	"Online volunteer"
Hillary Cruz B.	Costa Rica	30 hours (CEC)	Monteverde
Cabañas Los Pinos	Costa Rica	2 days	San Gerardo
Emily King	USA	2 months	Monteverde
Karolin Müller	Germany	5 months	Bajo del Tigre, Monteverde, San Gerardo, Finca Steller, Pocosal
Vassiliki Gortsas	Germany	2 weeks	San Gerardo

STAFF TRAINING AND WORKSHOPS

Table 11. Summary of staff training and workshops.

Topic	Location	Participants	Date
COVIRENAS workshop	Finca Steller	MCL staff	Mar. 4-5, 2015
Environmental laws	Finca Steller	La Tigra staff	April 30, 2015
Wilderness First Responder (WFR)	Monteverde	Henry Murillo, Alberto Zúñiga, Leslie Corrales	July 2015
Red Cross workshop	La Marina de San Carlos	Luis Solano	July 31-August 4, 2015
Solid waste management	Finca Steller	La Tigra staff	Aug. 31, 2015
Participative environmental monitoring using camera traps (SINAC)	Santa Rosa and Palo Verde National Parks	Hernán Chacón, Yuber Rodríguez	Sept. 29, 2015 Nov. 10, 2015
Design of rural tourism packages (INA)	Monteverde	Giselle Rodriguez	Oct 20-22, 2015
TeleSIG workshop	Monteverde Reserve	Luis Solano, Yuber Rodríguez	Nov. 17-19, 2015
Wilderness First Responder (WFR)	Heredia	Erick Barquero, Freddy Campos	January 18-26, 2016

DONATIONS

We thank all those individuals and organizations that have supported the MCL in 2015. Without your generous support, conservation of the Children's Eternal Rainforest would not be possible.

Table 12. Cash donations in US dollars.

Donor	Purpose
Bob Law (CIEE)	Bajo del Tigre
Panorama Tours	Land Purchase and Protection
Katherine VanDusen	WFR training 2016
Cabañas Los Pinos	Environmental Education
Friends of the Rainforest (FOR)	Executive Director Salary (Grant 13)
Friends of the Rainforest (FOR)	Critical Equipment and Infrastructure (Grant 14)
Friends of the Rainforest (FOR)	Land Purchase and Protection (Grant 15)
Engage Globally	General
Anonymous	General
Berg Family	General
Cabañas Los Pinos	General
Dev Joslin (CIEE)	General
Francis Joyce (Katherine VanDusen)	General
Colegio Americano de Madrid	General
Country Day School 2B, Costa Rica	General
Terry Garrett	General
Carlos Guindon (Debra Hamilton)	General
Katherine VanDusen	General
Alexandra Arciniega	Feria Ambiental MV 2015
Matthew Chavez	Feria Ambiental MV 2015
Jazmin Flores	Feria Ambiental MV 2015
Materiales Agro Sosi	Feria Ambiental MV 2015
Daniela Márquez	Feria Ambiental MV 2015
Unión VARSAN	Feria Ambiental MV 2015
Jorge Maroto	Motosierra
Iona y James Biddinton	Semana Santa Operative
Desafío La Fortuna S.A	Semana Santa Operative
Ecoterra Sociedad Anónima	Semana Santa Operative
Hotel La Fortuna	Semana Santa Operative
Luna Nueva Extractos de Costa Rica S.A.	Semana Santa Operative
Forestales del Milenio S y V SA	Semana Santa Operative
Cabañas Los Pinos	Protection
Tesseract School, Arizona, USA	General

Table 13. Donations via online payment system, in US dollars.

Donor	Purpose
Anonymous	General
Juan González	General
Erik Caspe	General
Mary V Gorges	General
Dorothy Lee	General
José López	General
Juan López	General
Rubén Martínez	General
Carlos Mendoza	General
Isabel Moíño	General
Luis Morales	General
Karah Oshman Blunt	General
Laura Stough	General
Surya Zidan Azanza	General

Table 14. Cash donations in Costa Rican colones.

Donor	Purpose
Anonymous	Barandas Bajo del Tigre
Anonymous	Environmental Education
Cabañas Los Pinos	Environmental Education: Transportation Bajo del Tigre field trip, Rafael Arguedas School (Cerro Plano)
Hotel Fortuna	Environmental Education: Field trip to Pocosol Station, Emilio Castro School
Anonymous	General
Alex Brown	General
Corporación de Viajes TAM S.A.	General
7th grade, Lincoln School, San José	General
María Esther Brenes	General
James Wolfe	General
Asoc. Desarrollo Turístico de Monteverde (Cámara de Turismo)	Feria Ambiental MV 2015
Cabañas Los Pinos	Feria Ambiental MV 2015
Clínica Dental Monteverde	Feria Ambiental MV 2015
El Pueblo de Villa González S.A (Cabinas El Pueblo)	Feria Ambiental MV 2015
El Trapiche Tour	Feria Ambiental MV 2015
Monteverde Computers	Feria Ambiental MV 2015
Refugio Biológico Monteverde Ltda	Feria Ambiental MV 2015
Universidad de Costa Rica	Feria Ambiental MV 2015
Bernal Zamora / Kinkajou Night Tour	Feria Ambiental MV 2015
Francis Joyce	Maintenance

Asociación Acueducto Rural La Fortuna	Semana Santa Operative
---------------------------------------	------------------------

Table 15. Cash donations in Euros.

Donor	Purpose
Colegio Americano de Madrid	General
Kinderregenwald Deutschland e. V.	Land Purchase and Protection, and visit by photographer Markus Mauthe
Children's Eternal Forests U.K.	

Table 16. In-kind donations, Costa Rican colones.

Donor	Purpose
Panadería Jiménez	Feria Ambiental MV 2015
Susana Salas (Caburé Argentine Café)	Feria Ambiental MV 2015
CONELECTRICAS	Semana Santa Operative: Fuel
Ilona & James Biddinton	Router w/ ½ bit, Finca Steller
Comisariato Chachagua	Environmental Education: Field trip to Pocosol Station, Emilio Castro School
Finca Educativa Juan	Environmental Education: Field trip to Pocosol Station, Emilio Castro School
Pollos Pako	Environmental Education: Field trip to Pocosol Station, Emilio Castro School

Table 17. In-kind donations, US dollars.

Donor	Purpose
Ecoterra Costa Rica	Environmental Education: Transportation, Environmental Brigade, La Tigra School
Desafío La Fortuna S.A.	Environmental Education: Student transportation to BEN
Desafío La Fortuna S.A.	Environmental Education: Transportation for field trip to Pocosol Station Emilio Castro School
Steve Tomey / Friends of the Rainforest "Buy a Boot" campaign	1 HP Pavilion laptop computer 24 AA batteries 1 SDHC Platinum 16 GB memory card 4 inflatable mattresses 3.5 2 inflatable mattresses 1.75 5 pairs of work gloves 4 cloth sacks for snake captures 1 animal cage (22-31 kg) 7 pairs of anti-snake boots 2 snake hook 1 large backpack

COMMUNITY PARTNERS

In addition to the members, donors, and staff who make the conservation of this incredible forest possible, we also rely on the support and goodwill of many individuals and organizations in the communities surrounding the BEN. The MCL is grateful to the following individuals, businesses, and institutions for their support of the Children's Eternal Rainforest:

Alfonso Oses, Naranjo, COVIRENA
Álvaro del Castillo, Centro de Rescate Asís, Javillos
Cabañas Los Pinos, Monteverde
Centro Soltis
Claudia Araya Jimenez
Comisariato Chachagua, Chachagua de Peñas Blancas
COVIRENAS San Ramón
Desafío Tours, La Fortuna
Esteban Maroto
Fuerza Pública de Bajo Rodriguez
Fuerza Pública de La Tigra
Fuerza Pública de San Isidro de Peñas Blancas
Fuerza Pública de San Ramón
Geiner Alvarado Huertas, Centro Científico Tropical
Gerardo Céspedes, La Tigra
Gilbert Araya Ruiz, Naranjo, COVIRENA
Guillermo Vargas Prendas, Monteverde
Jacamar Tours, La Fortuna
Jaime del Castillo, Centro de Rescate Asís, Javillos
Juan José Matamoros, Santa Clara
Juan José Rojas, Centro de Rescate Marina, La Marina de San Carlos
Juan Sostheim, Rancho Margot, El Castillo de Arenal
Jorge Rodriguez, Linda Vista
Lisbet Villalobos, Ferretería Villo, San Isidro de Peñas Blancas
Lubricentro San José, San José de La Tigra
Manuel Alfaro Alpizar, SINAC San Ramón
Marcelino Rodriguez Santamaría, Concepción de La Tigra
Maudin Alberto Arguedas Jimenez, Bajo Rodriguez
Meylin Quirós, La Tigra
Miguel Jimenez, SINAC-ACAT
Dr. Minor Cordero, SENASA, Regional Pacífico Central
Minor Elizondo Carranza, Valle Azul
Monteverde Country Lodge
Orlando Calvo Carballo, Monteverde
Policía de Tránsito de La Fortuna
Proyecto Removiendo Barreras
Raúl Furnier
Ricarte Jimenez, Bajo Rodriguez
Ronald Gonzalez, Súper Los Ángeles, Los Ángeles de La Tigra

Roy Araya Jimenez
Sergio Herrera, El Progreso de La Tigra
SINAC San Ramón
Steven Farrell, Finca Luna Nueva, San Gerardo de La Tigra
Susie Newswanger, Monteverde
Víctor Porras, San Juan de Peñas Blancas
Zoo Ave

NOMINATING COMMITTEE REPORT

The Nominating Committee is made up of: Luis Solano, José Soto, Manuel Solís, Sofia Arce, Eladio Cruz, y Mark Wainwright. The committee has worked on seeking new candidates for the Board of Directors and Fiscal Two.

We present the following nominations:

- President: Julia Matamoros (for 1 year), from March 1, 2016 to February 28, 2017. Mark Wainwright must resign from his position as President, in spite of the fact that he has one year remaining, because he has served for 8 consecutive years in a voting position on the Board. This is according to Article 29 of the Statutes of the organization.
- Vice President: Jorge Maroto (for 2 years), from March 1, 2016 to February 28, 2018. Jorge Maroto must resign from his position as Vocal 1, in spite of the fact that he has one year remaining in this position, in order to be eligible for the Vice President position.
- Treasurer: Bob Law (for 2 years), from March 1, 2016 to February 28, 2018.
- Vocal 1: Orlando “Fish” Calvo (for 1 year), from March 1, 2016 to February 28, 2017.
- Vocal 2: Eladio Cruz (for 2 years), from March 1, 2016 to February 28, 2018.
- Fiscal 2: Mark Wainwright (for 2 years), from March 1, 2016 to February 28, 2018. This position is permitted by the statutes, since it is not a voting position.

ORGANIZATIONAL STRUCTURE

Board of Directors

Mark Wainwright, President
Julia Matamoros, Vice President
Sofia Arce, Secretary
Bob Law, Treasurer
Jorge Maroto, Vocal I
Eladio Cruz, Vocal II
Robert Rojas, Vocal III

Nominating Committee

Sofia Arce
Eladio Cruz
Mark Wainwright
Manuel Solís
José Soto
Luis Solano

Fiscal

Marcos Mendez, Fiscal I
Yimer Morales, Fiscal II

Advisors

Lic. Víctor González, Topografía
Lic. Ricaute Jiménez, Legal (Pro Bono)
Licda. Meylin Quirós, Legal
Lic. Marco V. Retana, Legal

STAFF

Main Office, Monteverde

Lindsay Stallcup, Executive Director
Yuber Rodriguez, Director of Land Affairs
Giselle Rodriguez, Executive Secretary and Human Resources
Walter Bonilla, Accounting and Finance Coordinator
Marianela Muñoz, Accounting Assistant and Sales Coordinator
Leslie Corrales, Information Center
Rosibel Fallas, Miscellaneous
Eduin Méndez, Maintenance

Bajo del Tigre

Ivannia Arguedas, Coordinator
José Soto, Reception

San Gerardo Station

Geovanny Gonzalez, Station Manager
Ivannia Hernandez, Cook

Pocosol Station

Alexander Herrera, Station Manager
Roberto Sánchez, Station Manager

Finca Steller

Fabiola Peralta, Administrative Assistant
Carolina Brizuela, Environmental Education
Marcelo Rodriguez, Finca Steller and Nursery
Luisa Retana, Miscellaneous

Protection

Hernán Chacón, Coordinator
A. Alonso Sánchez
Alberto Zúñiga
Freddy Campos
J. Miguel Fernández

Maintenance

Luis Solano, Coordinator
Jorge Ramírez
Erick Barquero
Henry Murillo (until December 2015)
Luis Arana (as of February 1, 2016)

SUPPORTING COMITTEES

Legal Affairs

Gerardo Céspedes
Hernán Chacón
Ricaute Jiménez
Julia Matamoros
Jorge Maroto
Yúber Rodríguez
Luis Solano
Lindsay Stallcup

Research

Mark Wainwright
Bob Law
Eladio Cruz
Hernán Chacón
Sofía Arce

Marketing and Field Stations

Mark Wainwright (Coordinator)
Julia Matamoros
Bob Law

Finance

Bob Law (Coordinator)
Jorge Maroto
Julia Matamoros

Sales & Souvenirs

Mark Wainwright
Julia Matamoros
Bob Law
Ivannia Arguedas
Marianella Muñoz
Giselle Rodríguez
José Soto

Emergency Protocol

Mark Wainwright
Julia Matamoros
Luis Solano
Hernán Chacón
Lindsay Stallcup

LIST OF MEMBERS, 2016 (by date of membership)

HONORARY MEMBERS

1. Adrian Forsyth	24/01/1989	6. Patricia Fogden	04/02/2006
2. Sharon Kinsman	24/01/1989	7. Michael Fogden	04/02/2006
3. Harriet McCurd	24/01/1989	8. Gerardo Céspedes	24/05/1991
4. George Powell	24/01/1989	9. Bob Law	08/02/1986
5. Eha Kern	08/11/1990	10. Marco V. Retana	11/02/2012

ACTIVE MEMBERS

1. Wilford Guindon Hall	08/02/1986*	35. Ricaute Jiménez	10/06/2005
2. William A. Haber	08/02/1986*	36. Otto Méndez	0/06/2005
3. Richard LaVal Bugg	08/02/1986*	37. Yúber Rodríguez S.	16/12/2005
4. Bob Walter Law Britton	08/02/1986*	38. Mark Wainwright	21/11/2006
5. Joseph David Stuckey	08/02/1986*	39. Luis A. Solano Morales	18/05/2007
6. Guillermo Vargas Leitón	08/02/1986*	40. Roland Paul	15/08/2008
7. James Wolfe Ashley	08/02/1986*	41. Walter Bonilla Vásquez	08/01/2010
8. Francis John Joyce	24/01/1989	42. Mills Tandy	08/01/2010
9. John Thomas Longino	24/01/1989	43. Hernán Chacón Castro	23/09/2011
10. Nalini M. Nadkarni	24/01/1989	44. Deborah Hamilton	16/12/2011
11. Susie Newswanger Kilmer	24/01/1989	45. Evelyn Rockwell Solano	16/12/2011
12. Katherine C. VanDusen	24/01/1989	46. Sofía Arce Flores	20/01/2012
13. José Luis Vargas Leitón	24/01/1989	47. Giuliano Salazar Gigli	20/01/2012
14. Willow Zuchowski Pushkin	24/01/1989	48. Jose A. Soto Segura	20/01/2012
15. Bruce Erick Young	21/02/1989	49. Mercedes Días Herrera	11/02/2012
16. Suzanne Leseur Trostle	01/02/1990	50. María A. Vargas Chacón	11/02/2012
17. Marvin Hidalgo Montero	16/02/1990	51. Geiner Alvarado Huertas	20/04/2012
18. Alexander Alvarado Méndez	23/03/1990	52. Marcos A. Méndez Sibaja	02/11/2012
19. Carmen María Rojas González	08/10/1990	53. Jannelle Wilkins	30/11/2012
20. M. del Carmen Campos Araya	24/05/1991	54. Mauricio Vargas Salazar	13/12/2012
21. Gerardo Céspedes Rodríguez	24/05/1991	55. Jaime Del Castillo	26/07/2013
22. Jorge Maroto Puga	04/11/1992	56. John Devereax Joslin	16/05/2014
23. Yimer Morales	04/11/1992	57. Selena Avedaño	20/01/2015
24. Juan Carlos Corrales Arce	18/08/1993	58. Fabricio Camacho	20/01/2015
25. Karen Masters	18/08/1993	59. Randy Chinchilla	20/01/2015
26. Martha Iris Salazar Méndez	20/07/1994	60. María Estela Coghi	20/01/2015
27. Julia Matamoros Alvarado	20/07/1994	61. Wim De Backer	20/01/2015
28. Oscar Mario Vargas Solís	23/06/1995	62. Marlene Leitón	20/01/2015
29. Freddy Cruz Méndez	02/02/2001	63. Gabriela McAdam	20/01/2015
30. Robert Rojas Vásquez	02/02/2001	64. Priscilla Palavicini	20/01/2015
31. José E. Arévalo Hernández	20/07/2001	65. Fern Perkins	20/01/2015
32. Eladio Cruz Leitón	08/02/2002	66. John Porras	20/01/2015
33. Marvin Martín Chaverri	08/02/2002	67. Manuel Solís	20/01/2015
34. Jorge Arturo Torres Ortega	20/05/2005	68. Maricella Solís	20/01/2015

69. Justin Welch	20/01/2015	72. Alexa Stickel	13/02/2015
70. Orlando Calvo	13/02/2015	73. Noelia Solano	13/02/2015
71. Lindsay Stallcup	13/02/2015		

CONTRIBUTORS

1. Carlos Guindon Standing	24/01/1989	13. Ree Sheck	24/05/1991
2. Cynthia Echeverría López	24/01/1989	14. Tahnee Robertson	05/06/1991
3. Gregory Murray Kevin	24/01/1989	15. Alan Masters	18/08/1993
4. James E. Crisp McGowan	24/01/1989	16. Mauricio García Cambronero	20/07/1994
5. Marcy Lawton	24/01/1989	17. Gordon Patty	21/06/1996
6. Alan Pounds Joseph	24/01/1989	18. Jorge Vargas Cullel	17/08/2001
7. Robert M. Timm	24/01/1989	19. Carlos Aburto	18/05/2008
8. Nathaniel T. Wheelwright	24/01/1989	20. Alexander Kopper	18/05/2008
9. Kathy Winnett-Murray	24/01/1989	21. Matilde Steiner	18/05/2008
10. Lisa Ellis	01/02/1990	22. Tom Newmark	20/01/2012
11. Martha H. Moss	01/02/1990	23. Michael Besancon	15/06/2012
12. Omar Coto Loría	24/05/1991		

INACTIVE MEMBERS

1. César Santamaría Hidalgo	16/02/1990
2. Gilbert Jiménez Badilla	04/11/1992
3. Carlos L. Muñoz Brenes	19/12/2000
4. José L. Cambronero Cruz	12/02/2005
5. Sean O'Donnell	20/05/2005
6. Margaret Whitten	20/01/2006
7. Richard Whitten	20/01/2006

SISTER ORGANIZATIONS

Friends of the Rainforest (USA)

Chelsea Raiche, Executive Director
1324 Clarkson Clayton Center, #312
Ellisville, MO 63011, USA
Tel: 314-941-1257
Email: info@friendsoftherainforset.org
Web: www.friendsoftherainforest.org

Engage Globally (USA)

Heather Heckel, Executive Director
Tel: 202-291-2072
Email: engage@engageglobally.org
Web: www.engageglobally.org

Barnens Regnskog (Sweden)

Eha Kern, President
PL 4471 Hagadal
137 94 Vasterhaninge, Sweden
Tel & Fax: 08-530-23171
Email: eha.kern@edu.botkyrka.se
Web: www.barnensregnskog.se

Kinderregenwald (Germany)

Roland Paul, Chair
88213 Ravensburg, Angerstrasse 93
Germany
Tel: 0751-94012
Email: paul@kinderregenwald.de
Web: www.kinderregenwald.de

Children's Tropical Forests U.K.

Robin Jolliffe, Presidente
25 Broadway, Peterborough
PE 1 1SQ, England
Tel: 01733 563966
Email: ctforests@gmail.com
Web: www.tropical-forests.com

American School of Madrid

Joanna Miller
Apartado 80
Madrid, Spain 28080
Email: joannamiller@asmadrid.org

Fundación Benasis (Switzerland)

Audrey Leumann, Founder
Email: audrey@fundacionbenasis.org
Web: www.fundacionbenasis.org

Nippon Kodomono Jungle (Japan)

Email: kfukunaga@tim.hi-ho-ne.jp
Web: www.nipponjungle.blogspot.com

Children's Eternal Rainforest Monteverde Conservation League

Apartado 124-5655, Santa Elena de Monteverde, Puntarenas, Costa Rica
Tel: (+506) 2645-5200, 2645-5003
Web: www.acmcr.org / Email: info@acmcr.org
Facebook: Children's Eternal Rainforest / Bosque Eterno de los Niños

